

# Capharnaüm



## Controls

- Wrath: Unleash the storm, dial in everything from a snarling grind to full-on, blown-out fuzz mayhem.
- Scorch: Shape the fire, dark and guttural or sizzling and razor-sharp, the tone control lets you find your perfect burn.
- Pillar: Command the chaos—set your output level.

## Sculpted from Chaos

Capharnaüm is fuzz at its most raw, dense, biting, and gloriously untamed. Designed for players who want texture and violence in the same signal, it delivers a snarling voice that balances destruction with shape. No cleanup, no polish, just pure sonic upheaval.

## Forged for KAHFA

Inspired by Swiss band KAHFA and their track Capharnaüm, this fuzz was tuned to match their sound's emotional weight. Layers of saturation, crumbling edges, and a roaring low end, it's not just a pedal, it's a feeling captured in circuitry. An ode to sound that hits like a sermon.

## Features

- LED color: Red
- Enclosure: 125B Black PANTONE® BLACK-6 C
- Knobs: DAVIES 1900H Red
- Power Supply: Regular 2.1mm center-negative 9V DC >100mA
- Power Draw: <30mA
- Dimensions: W70mm. L125mm, H60mm
- Weight: 255g
- Switching: True Bypass
- Jacks: Top Mounted

# RhPf Electronics



# Capharnaüm

*Sonic Riot Machine*



## User Manual

<https://rhpfelectronics.com/>

Original Circuits. Unique Tone. Swiss Precision.

## Wrath Unleashed

The Wrath knob blends two gain textures: wild, high-gain fuzz and a dark, heavy distortion. One is searing, the other grounded, together they let you layer chaos over grit, or carve fury from depth.

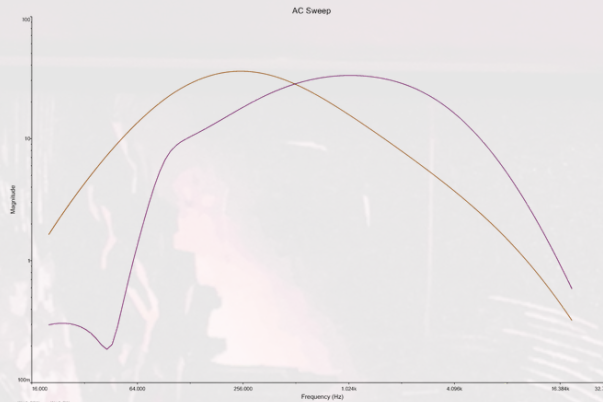
## Scorch and Shape

Scorch is your tone control, but not in the usual way. Turn it clockwise for cutting, sizzling highs or counterclockwise for thick, guttural lows. It's not subtle, it's sculpting with fire.



## Always Alive, Never Gated

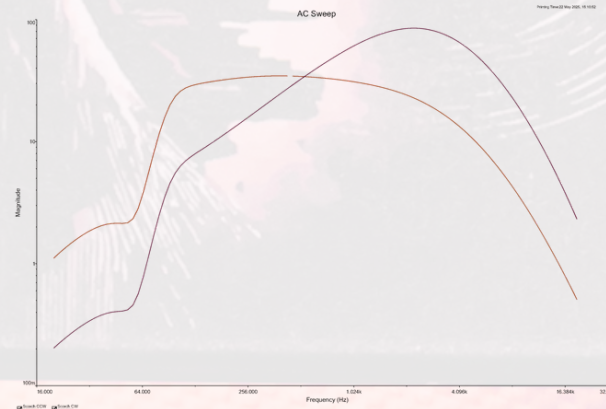
Despite its intensity, Capharnaüm resists harsh gating. Notes swell, collapse, bloom, and fade with natural motion. It stays reactive and musical, no matter how much noise you throw at it.



Wrath Bandwidth

## Texture You Can Feel

This fuzz doesn't smear, it growls. Every chord stays massive, every note gritty and physical. From sizzly high-end crackle to rumbling low-end bloom, it's an amp-pushing, cab-vibrating presence.



Scorch Bandwidth

## Designed to Collapse, Not Break

At its core is a split-path architecture that builds saturation from two different angles. That tension, between stability and failure, is what gives Capharnaüm its strange coherence. It sounds like it's falling apart... but never does.

## No Cleanup, No Compromise

Capharnaüm wasn't made to behave. It doesn't clean up with your volume knob. It doesn't get pretty. And it doesn't need to. It's a full-force fuzz that shows up only when you're ready to let things get messy.

