



iRig Stream

Audio streaming interface
for iOS and Mac/PC

USER MANUAL

Table of Contents

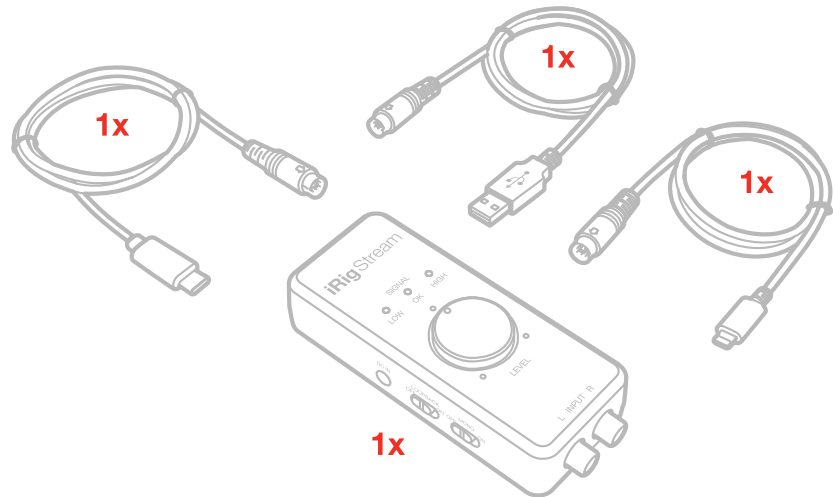
Contents	2
English	3
iRig Stream	3
Register your iRig Stream	3
Overview	4
Installation and setup	5
Connecting iRig Stream to Mac/Pc	9
iRig Stream signal LEDs	9
Connection examples	10
Connecting headset/phones	10
Connecting line level signal to the RCA inputs	11
Connecting RCA and headset	11
Using the loopback function	12
Using the mono function	12
Troubleshooting	13
Specifications	13
Warranty	14
Support and more info	14
Regulatory	15

iRig Stream

Thank you for purchasing iRig Stream.

Your package contains:

- iRig Stream.
- Lightning cable.
- USB-A cable.
- USB-C cable.
- Quick Start Guide.
- Registration Card.



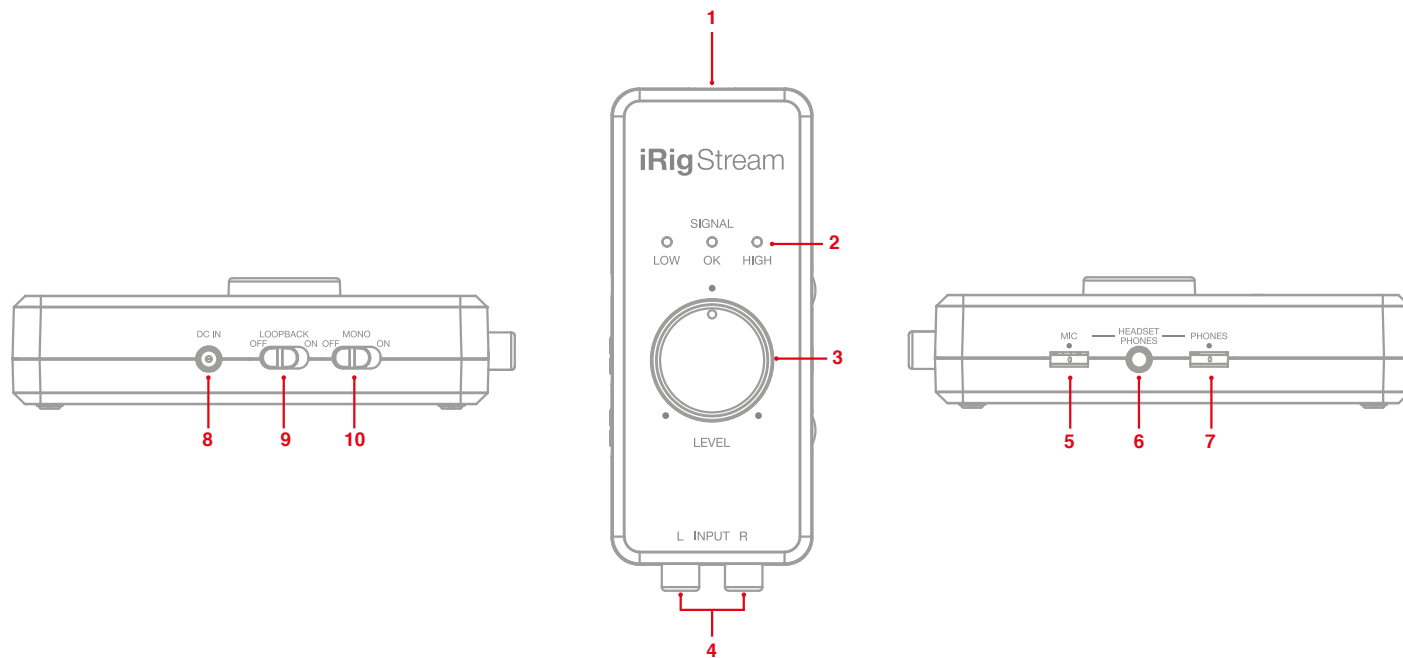
The iRig Stream is a compact MFi audio streaming interface perfect for the musician or content creator on the go. The iRig Stream pre-mixes multiple sources of audio (line input and microphone) down to a Stereo (or Mono) track that's routed to your favorite streaming media service. And for true ready-to-go convenience, the iRig Stream delivers continuous use via USB power (device powered) or, alternatively, it can be connected to an optional PSU that will charge the connected iOS device.

Register your iRig Stream

By registering, you can access technical support, activate your warranty and receive free JamPoints™ which will be added to your account. JamPoints™ allow you to obtain discounts on future IK purchases! Registering also keeps you informed of all the latest software updates and IK products.

Register at: www.ikmultimedia.com/registration

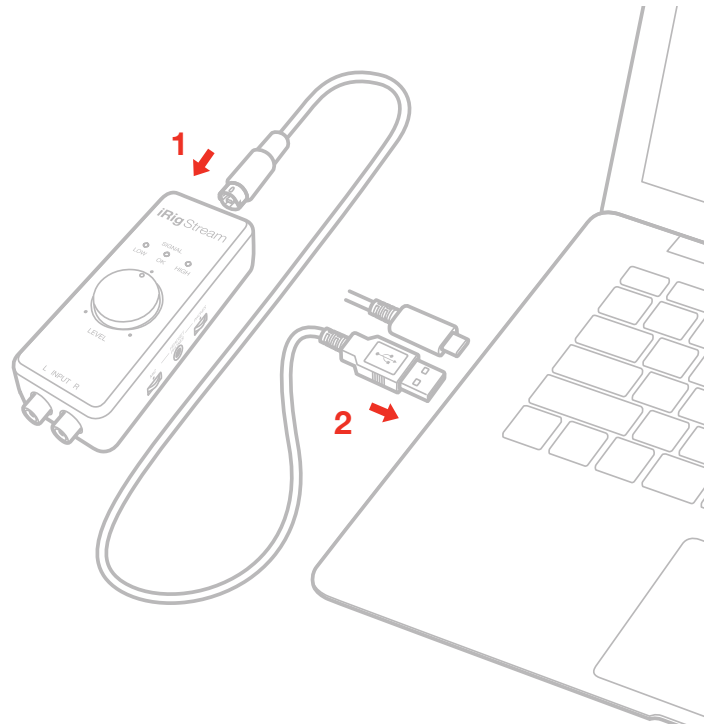
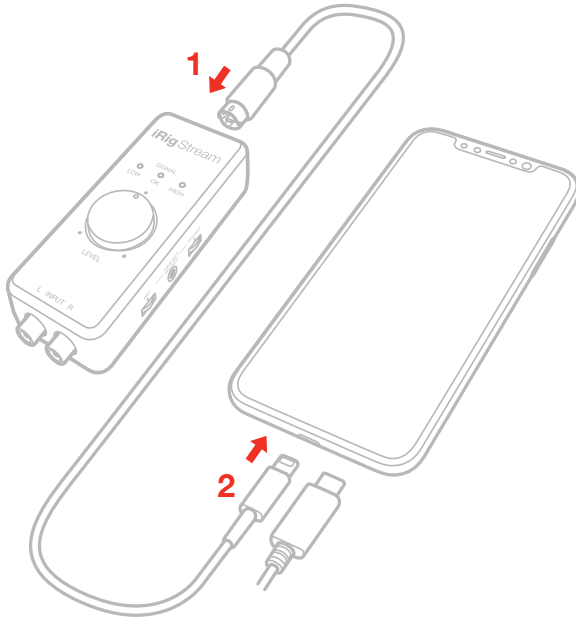
Overview



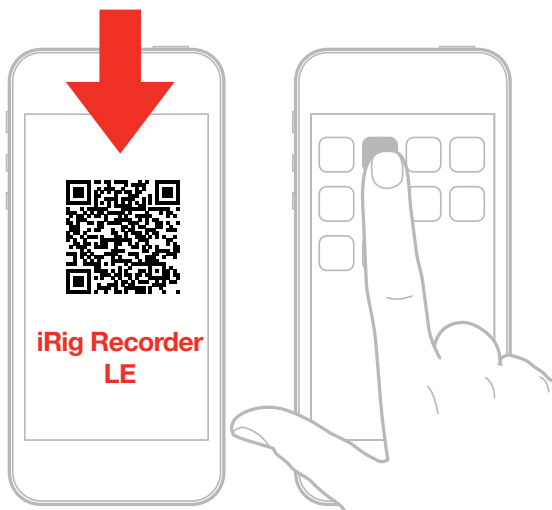
- 1_ mini-DIN host connection
- 2_ LED signal meter
- 3_ Main Level knob
- 4_ RCA line inputs
- 5_ Microphone gain control
- 6_ Headset/Phones jack
- 7_ Phones level control
- 8_ DC input for optional PSU
- 9_ Loopback switch
- 10_ Mono switch

Installation and setup

1. Connect the iRig Stream to the host device with the provided cable (Lightning, USB-A and USB-C).

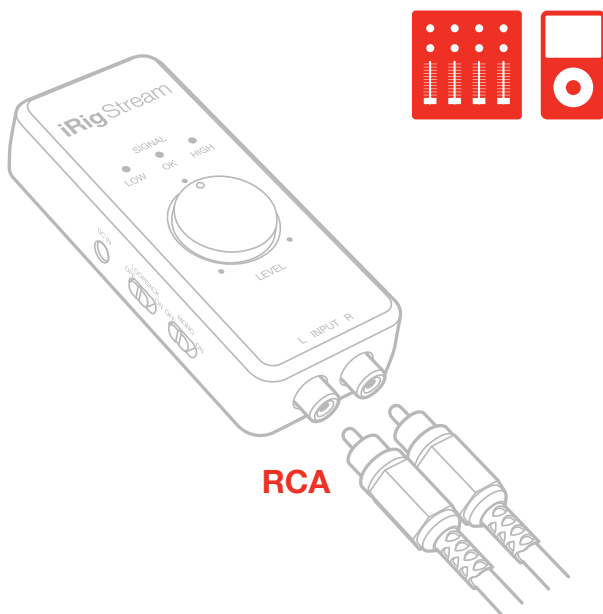


2. Download and launch the app.

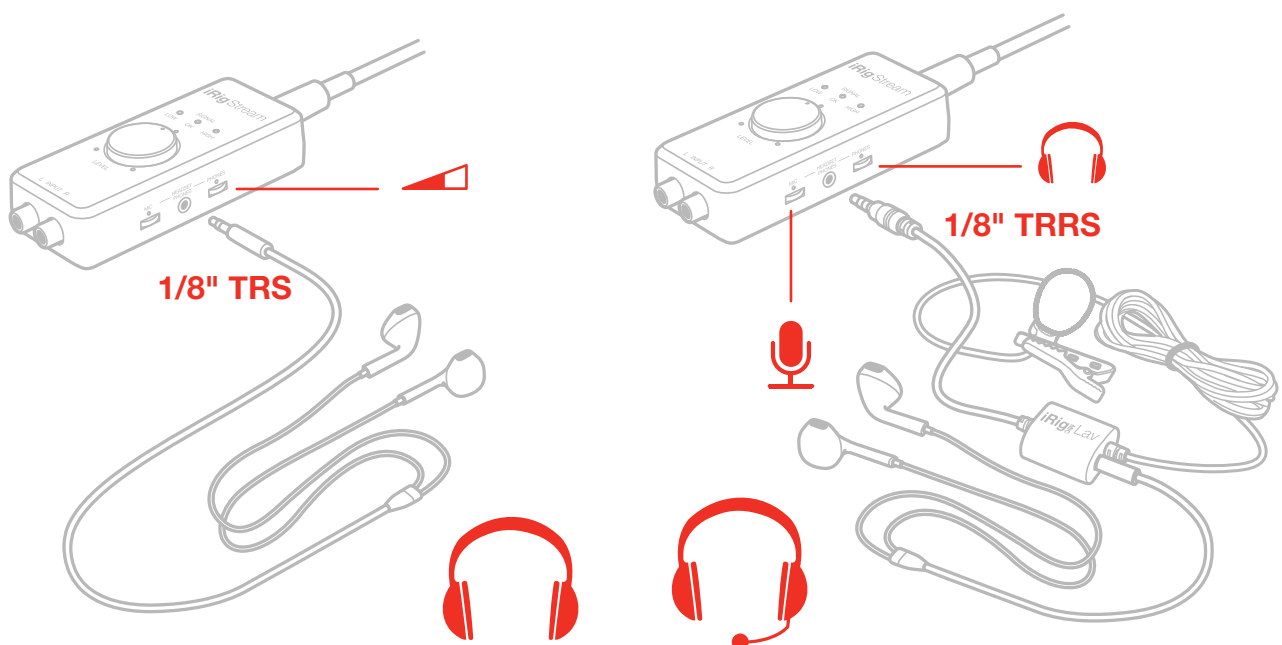


ikdownloads.com/irigstream

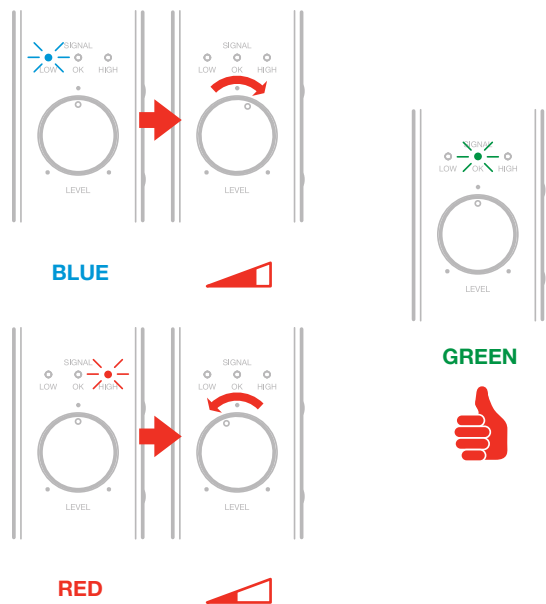
3. In order to allow you to monitor the incoming audio with apps and software that do not allow for audio input monitoring, a direct monitoring function is always enabled on iRig Stream. If a “phasing” effect is present, you can disable the input monitoring from your recording app. For more details about its monitoring function, refer to the documentation for the audio software.
4. Connect any line level signal to the front RCA stereo input. To adjust the volume of the device connected to these connectors, use the volume controls of that device and the Level knob on top of iRig Stream.



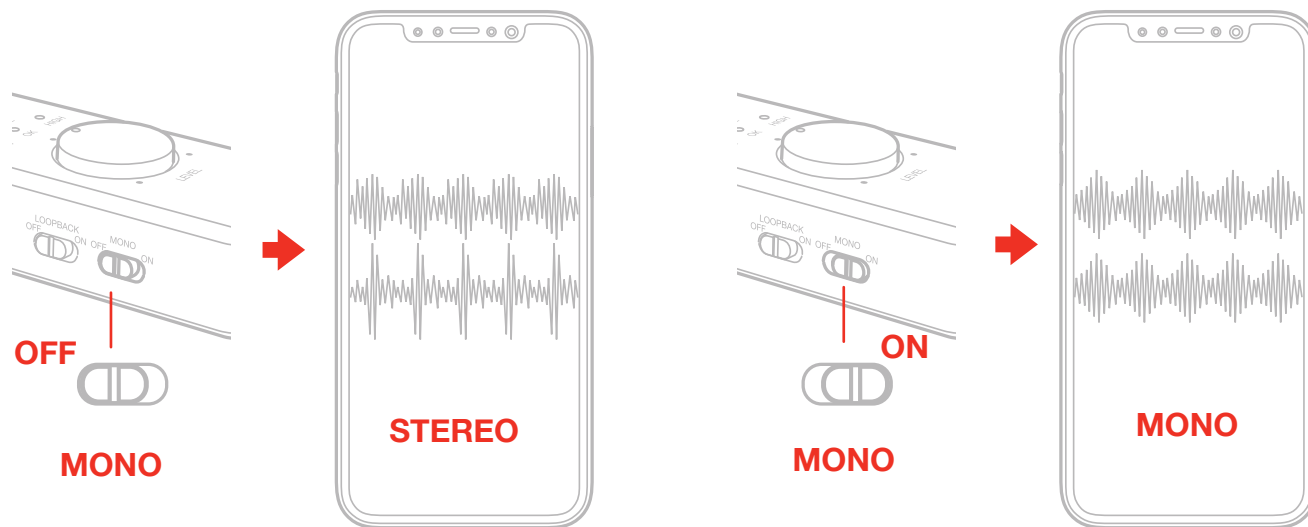
5. Connect a TRRS headset (compatible with CTIA standard) or an iRig analog microphone to the 1/8” Headset/Phone jack. You can adjust the microphone level with the Mic thumbwheel and the headphone level with the Phones thumbwheel. Alternatively, you can directly connect a pair of headphones to the Headset/Phone jack and set its level with the Phones thumbwheel.



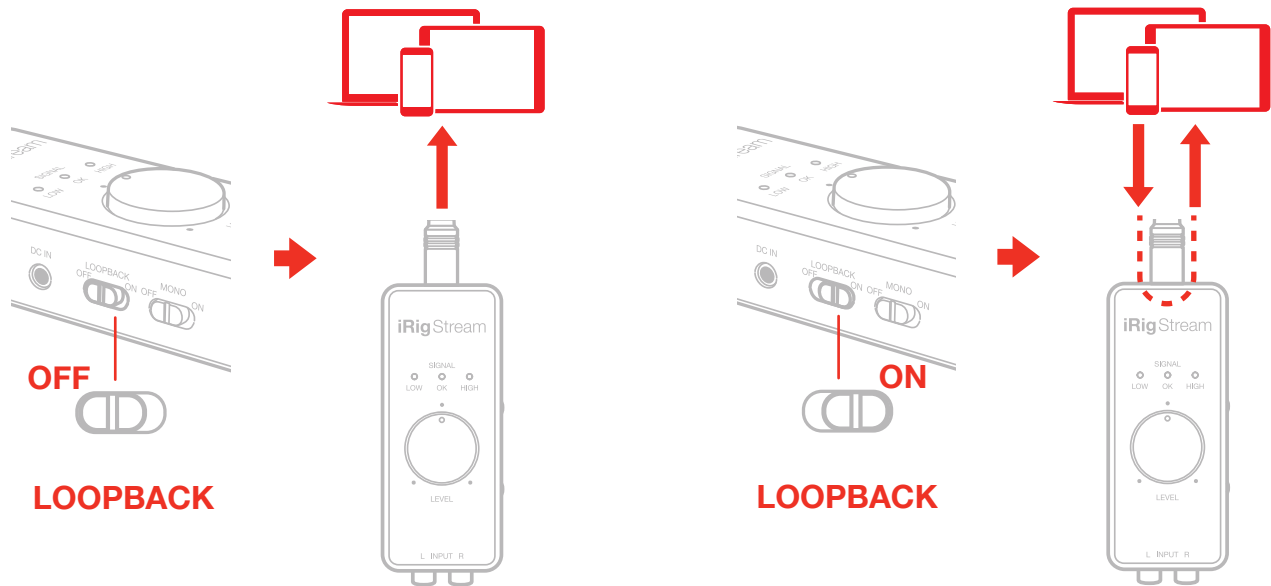
6. The main Level knob lets you control the overall audio input streaming level coming from the RCA line input and from the (eventually) connected microphone/headset.



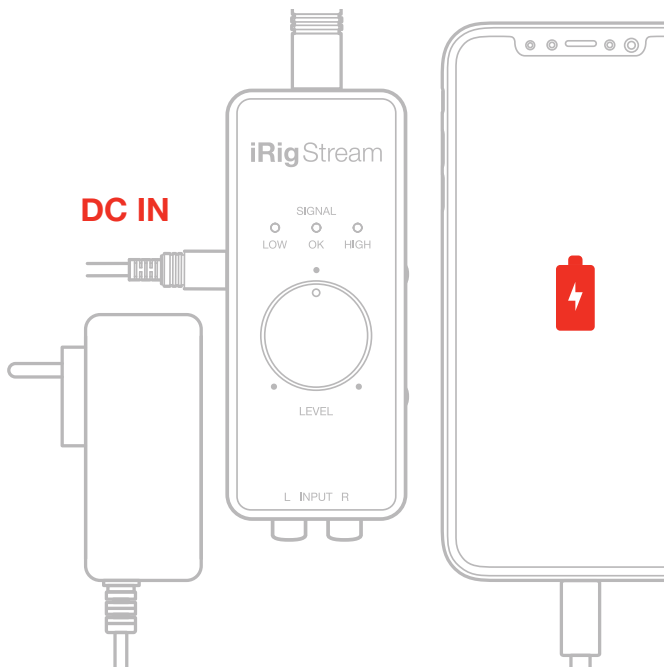
7. With the Mono switch turned on, the audio stream to your host will pass from a stereo streaming to a mono streaming. This is helpful with apps that accept mono audio streams.



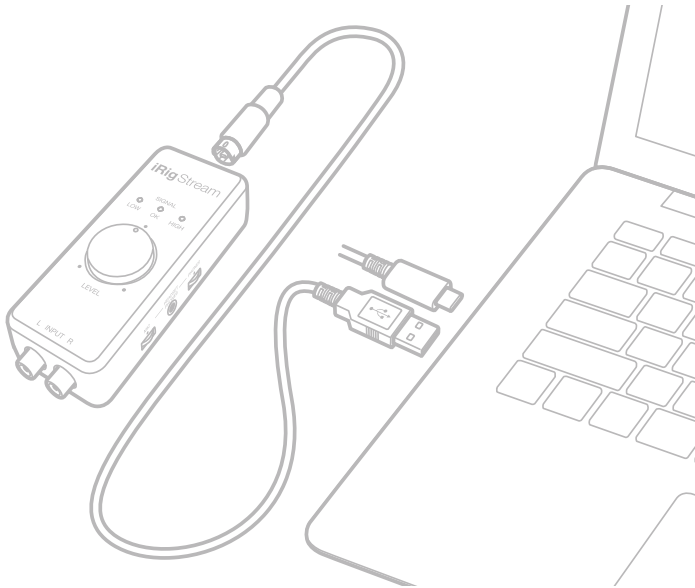
8. With the Loopback function turned on, the audio that is input to the iRig Stream from your host via USB is returned back to the host. Also in this case, the main Level knob will control the overall level that is recorded.



9. With the optional PSU (iRig PSU 3A), the iRig Stream can charge the connected iOS device.

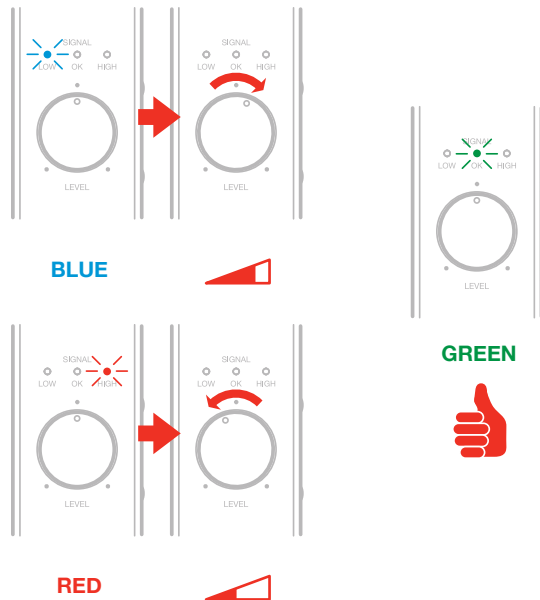


Connecting iRig Stream to Mac/Pc



Once the iRig Stream is connected to the host with the appropriate cable, launch your audio application and select iRig Stream as the input/output device from your system's audio preferences. All the functionality described above allows you to cope with any registration and streaming needs.

iRig Stream signal LEDs



The three LEDs on iRig Stream give you important information about the iRig Stream's operating status. Each status is indicated by a different color:

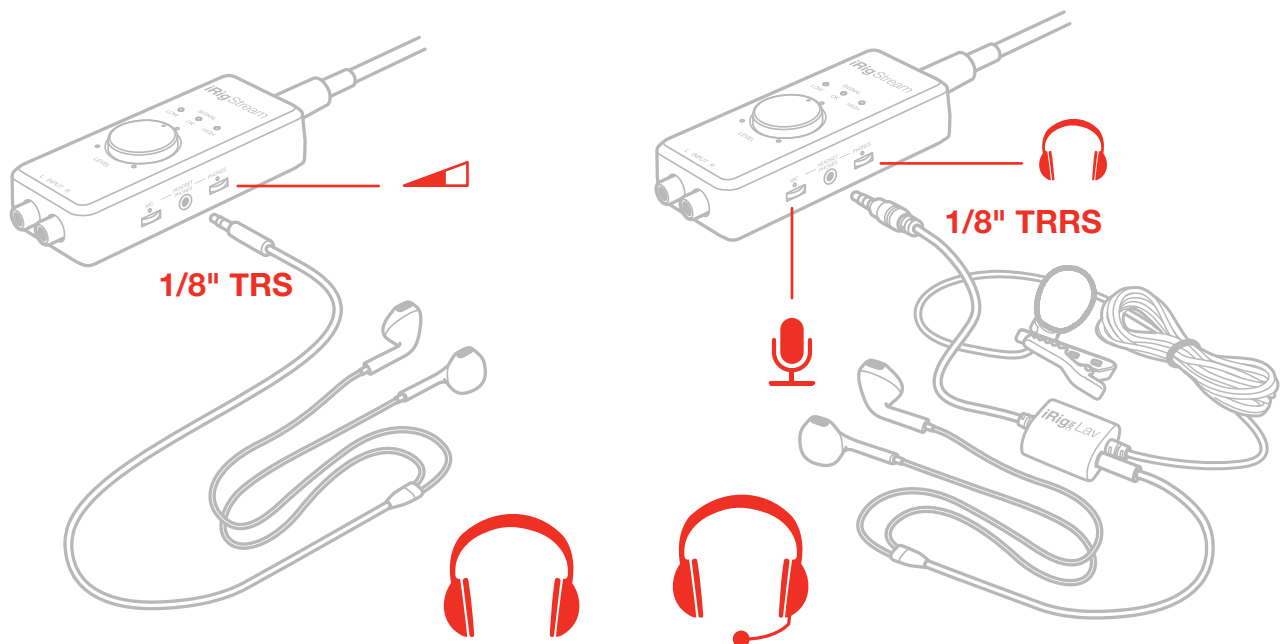
- **Signal LOW**: bright **blue** LED. iRig Stream is connected and active and the input signal is low. Use the main Level knob to increase the overall level that is recorded.

- Signal OK: **green** LED. iRig Stream is active and the input signal is OK.
- Signal HIGH: **red** LED. iRig Stream is active and the input signal is too high. Use the main Level knob to decrease the overall level that is recorded.

Connection examples

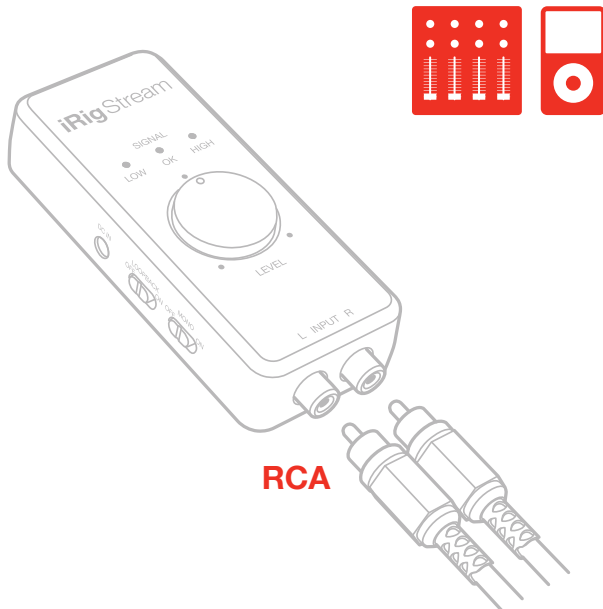
Here are some examples of connecting mic or line level signals to iRig Stream.

Connecting headset/phones



It is possible to connect an headset (compatible with CTIA wiring standard) or an iRig analogue microphone to the Headset/Phones port. The headset's microphone gain can be controlled with the MIC thumbwheel. In this case the main Level knob will control the overall signal level that is streamed to the connected host. If an headphones is connected, its volume can be controlled with the PHONES thumbwheel.

Connecting line level signal to the RCA inputs



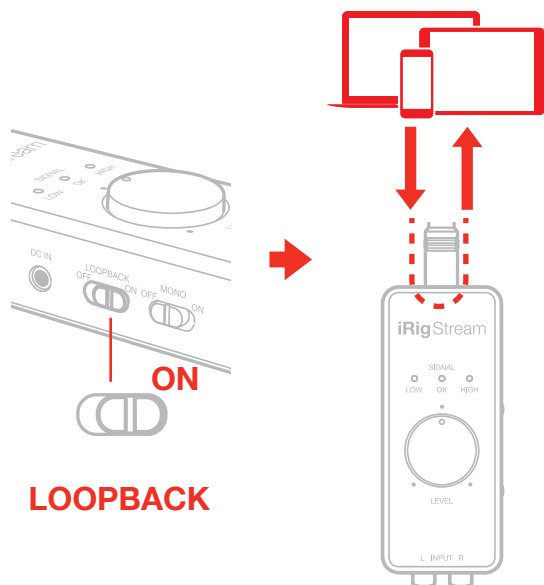
It is possible to connect any line level source to the RCA inputs. This signal can come from an mp3 player, a computer or an audio mixer. The main Level knob adjusts the overall volume that is recorded. To adjust the volume of the device connected to the RCA inputs, use the volume controls of that device.

IMPORTANT: please note that these are line level inputs and not PHONO inputs so, PHONO signal, needs to be converted to a LINE LEVEL signal before to be connected.

Connecting RCA and headset

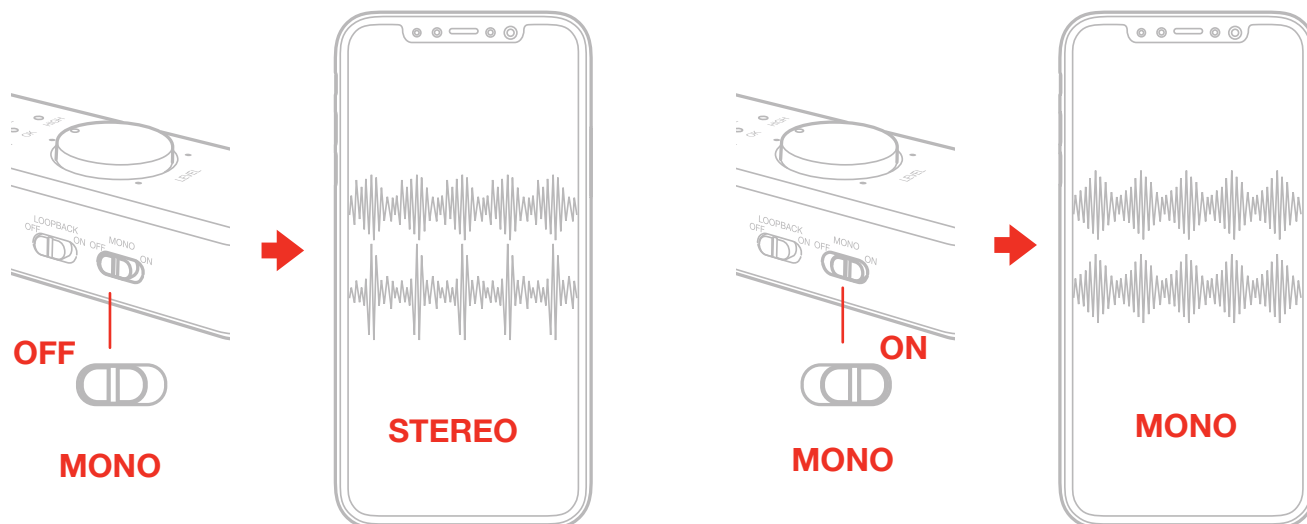
It is also possible to connect both RCA and headset at the same time. In this case the mic gain will be controlled by the MIC thumbwheel and the overall volume that is recorded (RCA+Mic) is controlled by the main Level knob.

Using the loopback function



With the LOOPBACK function turned on, the audio that is input to the iRig Stream from your host via USB is returned back to the host. The main Level knob will control the overall level that is recorded.

Using the mono function



The stereo streaming to the host can be converted to a mono streaming thanks to the MONO switch. This is helpful with apps that accept mono audio streams.

Troubleshooting

Sound is distorted.

Check that the input level on iRig Stream has been set properly. If the signal LED is red (HIGH) when you stream your audio, decrease the input level as described in this guide.

I don't get any sound.

In order for iRig Stream to turn on, a Core Audio-compatible audio app must first be launched on your iOS device or Mac.

- iOS: be sure you are using an app that works with audio input from the Lightning dock connector.
- Mac: be sure you have set "iRig Stream" as the audio input device on the audio app you are using.

A "phasing" sound is present while monitoring the incoming signal.

In order to allow you to monitor the incoming audio with apps and software that do not allow for audio input monitoring, a direct monitoring function is always enabled on iRig Stream. If a "phasing" effect is present, you can disable the input monitoring from your recording app. For more details about its monitoring function, refer to the documentation for your audio software.

Specifications

Common

Conversion: 24-bit A/D, 24-bit D/A

Sampling Rate: 32 kHz, 44.1 kHz, 48 kHz

Power: USB bus powered or, DC IN. When connected to an external PSU (iRig PSU 3A, not included), iRig Stream charges the connected iOS lightning device.

Metering: 3x LEDs

Device Connection: mini-DIN

Dimensions: 105.5mm x 44.5mm x 24mm (4,15"x1,75"x0,94")

Line input

Connector: 2x RCA (unbal.) Left/Right

Nominal Input Level: -10dBV

Head Room: 12dB

Input Impedance: 16.5kOhms

Frequency Response: 20 Hz – 20kHz

Headset/Phone

Connector: 1/8" TRRS jack (CTIA wiring standard)

Supply voltage: > 2,5V

Microphone gain: Adjustable with numbered thumbwheel

Frequency Response: 20 Hz – 20kHz

Headphone Level control: numbered thumbwheel

Headphone Output Power: 100mW into 50Ohms

Warranty

Please visit:

www.ikmultimedia.com/warranty

for the complete warranty policy.

Support and more info

www.ikmultimedia.com/support

www.irigstream.com

IK Multimedia

IK Multimedia Production Srl

Via dell'Industria 46, 41122 Modena, Italy
Phone: +39-059-285496 - Fax: +39-059-2861671

IK Multimedia US LLC

590 Sawgrass Corporate Pkwy, Sunrise, FL 33325
Phone: (954) 846-9101 - Fax: (954) 846-9077

IK Multimedia Asia

TB Tamachi Bldg. 1F, MBE #709,
4-11-1 Shiba, Minato-ku, Tokyo 108-0014

www.ikmultimedia.com/contact-us



"Made for iPod," "Made for iPhone," and "Made for iPad" mean that an electronic accessory has been designed to connect specifically to iPod, iPhone, or iPad, respectively, and has been certified by the developer to meet Apple performance standards. Apple is not responsible for the operation of this device or its compliance with safety and regulatory standards. Please note that the use of this accessory with iPod, iPhone, or iPad may affect wireless performance.

iRig® Stream, iGrand Piano™ and SampleTank® are trademarks property of IK Multimedia Production Srl. All other product names and images, trademarks and artists names are the property of their respective owners, which are in no way associated or affiliated with IK Multimedia. iPad, iPhone, iPod touch Mac and Mac logo are trademarks of Apple Computer, Inc., registered in the U.S. and other countries. Lightning is a trademark of Apple Inc. App Store is a service mark of Apple Inc.