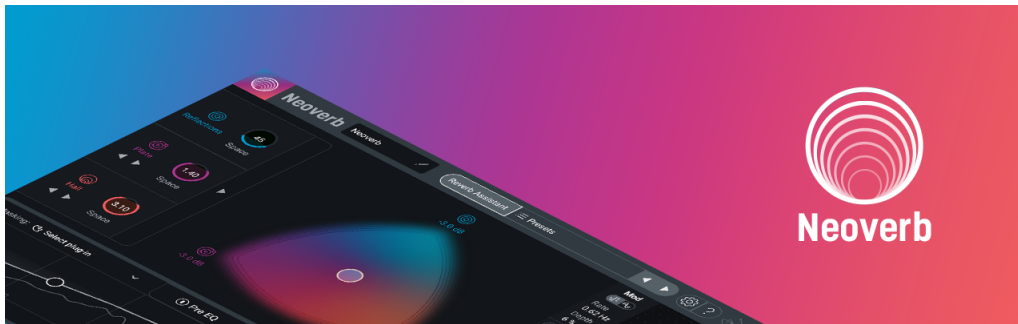


# Neoverb Documentation

## Introduction



## Neoverb: A Reverb That Listens

Reverb is a crucial element in any music. The original purpose was to give sounds recorded in the studio's dry audio environment a sense of acoustic space. Over the years, reverb has also become a special effect that may or may not relate to physical spaces.

Neoverb takes a new approach to creating and editing reverb, and excels in five main ways:

1. **Blend multiple reverbs together to create unique, original sounds.** Three distinct reverb engines, with the ability to morph among them, gives more interesting, realistic, and flexible sounds than single-engine reverbs.
2. **Cuts the complication.** Traditional reverbs have many interacting parameters, which complicates editing. The Reverb Assistant feature distills the controls down to musically meaningful

parameters, so you can dial in the right sound in under a minute, without disturbing your workflow.

3. **Dive as deep as you want.** Although the Reverb Assistant makes editing easy, you can expose the parameters it adjusts for creative sound design.
4. **Prevent Build-Up.** Mixing with reverb can be challenging, but iZotope's Auto Cut and Unmasking features can allow your reverb selections to more cleanly fit into the mix.
5. **Superior sound quality.** Neoverb is powered by Exponential Audio's famous reverb engines. Inspired by classic studio hardware, Exponential Audio reverbs are beloved for their high quality algorithms and realistic room sounds.

At iZotope, it's no secret that we design products we want to use for ourselves. Neoverb has become the go-to reverb for many of us, and we'd be honored if it becomes part of your music.

## Neoverb Overview

Although Neoverb offers unprecedented ease of use, it also offers extreme depth so that you can create unique, personalized sounds. You'll edit your sounds using these main elements.

1. The innovative **Blend Pad** interface chooses any proportion of three different reverb engines, and mixes them into one sound. The first Reverb engine generates early reflections. Reverb 2 generates reverb tails for either Room, Medium Chamber, or Plate reverb sounds, while Reverb 3 generates reverb tails for Large Chamber or Hall reverb sounds.
2. For deep editing, an **Advanced** panel exposes 17 additional parameters (like Decay Time, Size, Damping, Diffusion, etc.) that affect the reverb engines.
3. A **Pre EQ** section can analyze the input signal to reduce resonances for a sweeter reverb sound, or you can adjust this manually.
4. The **Reverb EQ's** "unmask" feature prevents a build-up of reverb frequencies that could interfere with other sounds in the same frequency range. It can compare the dry and wet sounds.
5. A **Smoothing** transient shaper softens the transients of signals entering Neoverb, in turn making the resulting signal smoother and more even sounding.
6. Neoverb's **Mod** section uses an X-Y interface to modulate reverb parameters over time, which adds variety and animation to the

reverb effect.

7. Some parameters can **sync to the host tempo** to create rhythmic-oriented reverb effects.

### ★ SHORTCUTS

Alt+Click returns most controls to their default positions. Double-clicking within most controls or labels opens a text field where you can type in a specific value.

# Getting Started

## Overview

Welcome to Neoverb! This chapter includes information on authorizing the plug-in, and inserting it into your project.

## Authorization

### iZotope Product Portal

The quickest and easiest way to manage installation and authorization of iZotope products on your system is through iZotope Product Portal. [Click here for more information about installing and using iZotope Product Portal.](#)

### Trials, Demos, and Manual Authorization

If you launch Neoverb without having authorized it using Product Portal, the Authorization window will appear. The Authorization window allows you to:

1. **TRIAL:** Start or continue a Trial period evaluation prior to purchasing.
2. **DEMO:** Continue evaluating the product with Demo limitations (after the 10 day Trial period ends).
3. **AUTHORIZE:** Authorize the product with a serial number.

## Trial Mode

Trial mode allows you to evaluate Neoverb over a 10 day trial period. The trial period begins when you first open Neoverb in a DAW/NLE. The Authorization window will display the number of days remaining in your trial period. Click the Continue button to exit the Authorization window.

## Demo Mode

After your 10 day trial period expires, you have the option to operate Neoverb in Demo mode. To continue evaluating Neoverb in demo mode, click the Demo button.

### DEMO MODE LIMITATIONS

Neoverb will periodically output silence when operating in demo mode.

## Manual Authorization

To disable Trial or Demo modes, you must authorize the product with a valid serial number. We offer three authorization methods for Neoverb: **Online Authorization:** Authorize on a computer online. **Offline Authorization:** Authorize on a computer offline. **iLok Authorization:** Authorize using iLok.

### ❗ MORE AUTHORIZATION HELP

1. For information about Authorization, please visit the iZotope website: <https://www.izotope.com/authorization>
2. For additional help authorizing Neoverb, visit the iZotope Customer Care information on the iZotope website: [support.izotope.com](https://support.izotope.com) or contact our Customer Care department by sending an email to: [support@izotope.com](mailto:support@izotope.com).
3. More information about iZotope's Customer Care department and policies can be found in the [Customer Care](#) chapter.

## Inserting Neoverb: Channel vs. Bus

There are three main ways to insert Neoverb in your project:

1. **Bus insertion:** For the traditional application of simulating an acoustic space, insert Neoverb in a reverb bus. To add reverb to a particular channel, insert a send (usually post-fader) that sends signal from each channel to the reverb bus. The send level determines how much reverb gets applied to the sound, which places the sound closer or further away in the stereo field. When used as a bus effect, the reverb is usually 100% Wet, because the channel fader provides the dry sound.
2. **Channel insertion:** To add a particular reverb effect to an individual mixer channel, insert the reverb in a channel insert.
3. **Clip insertion:** Some programs allow applying to individual clips within a track. This is ideal for adding something like a reverb splash to a single snare hit.

### ★ TIP

In some DAWs, the clip needs to be as long as the reverb decay.

Power consumption considerations. Realistic-sounding reverb requires extremely complex processing that taxes your computer's CPU, so use Neoverb in a bus when possible. For example, if you want reverb on four

tracks of background singers, send the tracks to a reverb bus saves more CPU power than inserting a reverb on each track.

★ **TIP**

If you need to insert individual reverbs in multiple channels, most DAWs can “freeze” or “transform” tracks into a much less power-hungry audio track that incorporates the effect’s sound, but disconnects the effect from the CPU. If you need to make further edits, you can usually “unfreeze” the track, make your changes, and then freeze again.

## Reverb Assistant

### Start Your Reverb Right

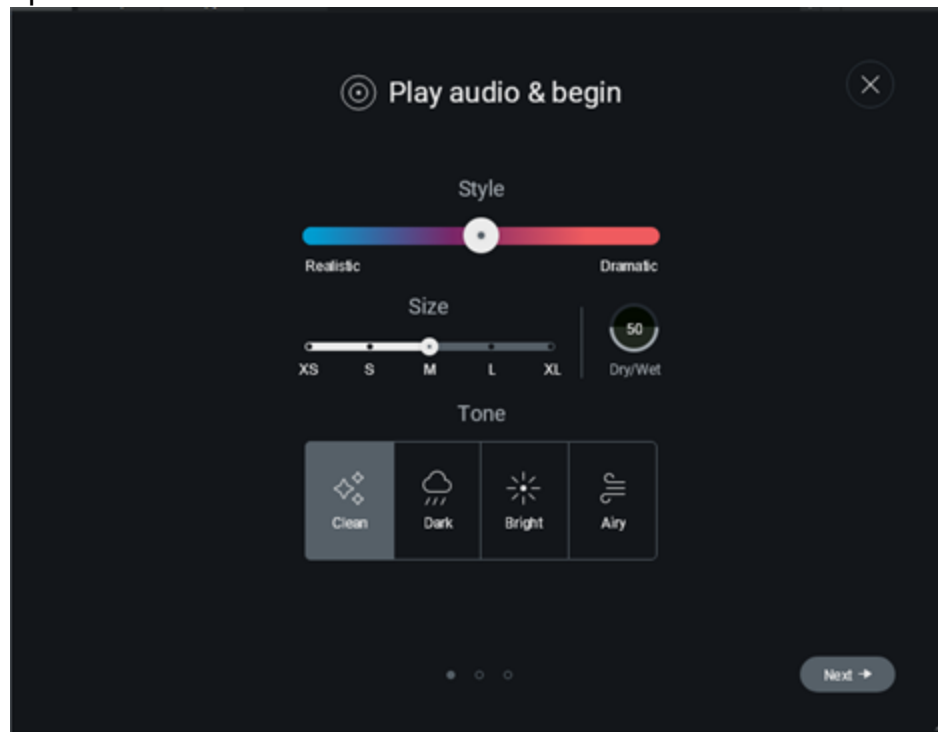
Reverb Assistant is the first iZotope assistant that works in real time to give you a starting preset that works for your music. It’s not only a wonderful introduction to Neoverb, you’ll likely use it even after you become a Neoverb expert. It’s liberating to tell Neoverb what kind of sound you want, and a few seconds later—there it is. In lieu of using Reverb Assistant, you may wish to get started by browsing Neoverb’s [presets](#).

### Reverb Assistant

Reverb Assistant will help you dial in a sound, usually in well under a minute.

1. After inserting Neoverb as described above, open it and click the Reverb Assistant tab at the top. The Reverb Assistant window

opens.



2. Choose the reverb's basic sound qualities.

1. **Style:** The leftmost setting models a physical room. Moving the slider to the right changes the reverb parameters to create a larger, acoustically complex, and dramatic-sounding space.
2. **Size:** Fine-tunes the initial size set by Style.
3. **Dry/Wet:** Chooses the proportion of reverb and dry sound. The higher the number, the wetter the sound.

★ **TIP**

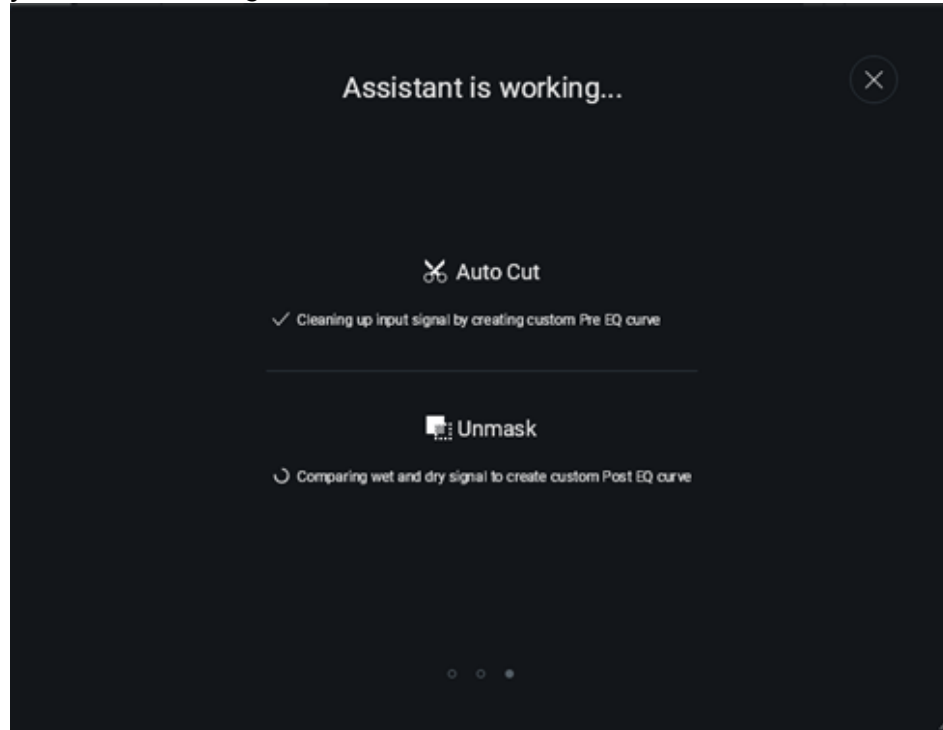
When used as a bus effect, the reverb is usually 100% Wet, because the channel fader provides the dry sound.

4. **Tone:** Clean is a traditional reverb sound. Dark gives a more muted effect, like reverb in a space with lots of acoustically absorbent surfaces. Bright has less reverb at low frequencies, which is a common choice with drums so the kick doesn't muddy the sound with lots of reverb. Airy is a fine choice for giving vocals a diaphanous, transparent reverb sound.

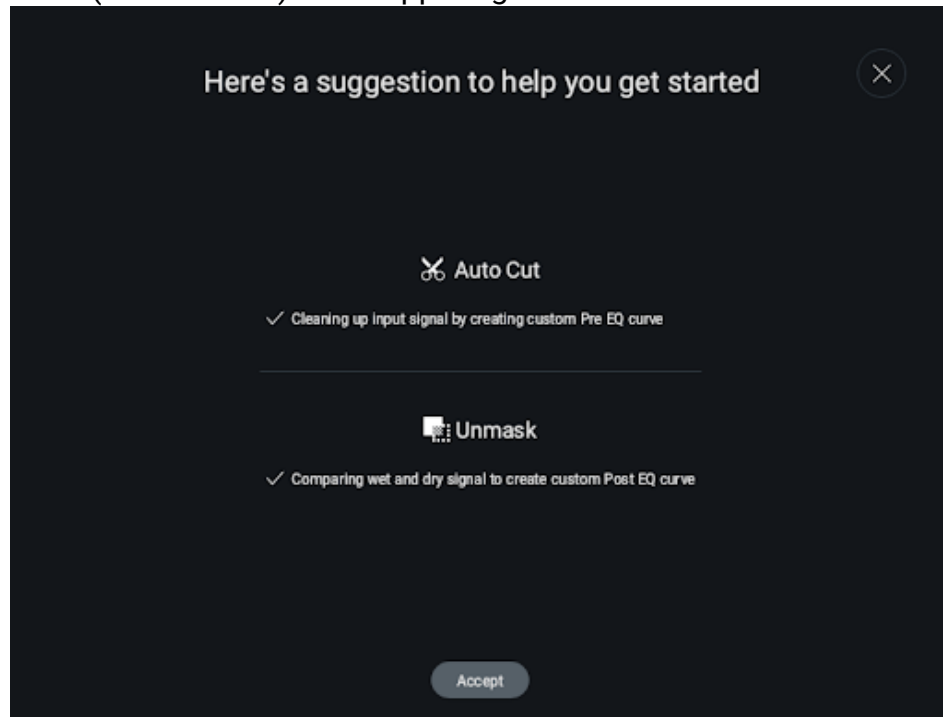
3. Be sure that the music you want to be analyzed is playing (preferably audio that covers a wide range of frequencies), then

click on **Next**.

4. Now Reverb Assistant's artificial intelligence kicks in. It analyzes your musical material, and then tweaks the parameters to optimize your basic settings.



5. To accept Neoverb's suggestions, click on Accept. Otherwise, click the X (close button) in the upper right and start over.



# General Controls

## Overview

This section describes how to edit each of Neoverb's various modules. Areas that aren't relevant to the edits being covered are grayed out. The order of edits is in the approximate order in which you would edit a preset to customize it to your needs.

## Basic Edits



1. The multicolor **Blend Pad** visual morphs among the three engines. Click+drag the node in the middle to choose each engine's level.
2. The **engine icons** (blue, violet, and orange) at the Blend Pad points represent the three reverb engines. The display underneath the three engine icons shows the current level of each engine.
3. Click on an **engine icon** to toggle between enabling (bright icon) or bypassing (dim icon) the engine.
4. The **Dry/Wet** slider displays the percentage of reverb sound in the output. Tip: When inserted in a bus, this will usually be 100% wet, because a channel's fader provides the dry signal.
5. **Level** sets Neoverb's Output level. Set this low enough to avoid overdriving subsequent stages, or use it to boost quiet-sounding reverb settings.
6. **Pre-Delay** affects all three engines. This parameter represents the time it takes for a sound to travel from its source to the first reflective surface. Pre-Delay can sync to the host tempo, as described later.
7. **Smooth**, based on transient shaping technology, softens the transients of signals entering Neoverb. This can in turn, make the reverb reacting to the incoming audio smoother and more even

sounding. An associated Power button (I) turns this function on or off.

8. Drag the small **resize triangle** in the screen's lower right to change the interface's size.

## Engine Quick Edits



1. Click on an engine icon toward the left to enable (bright icon) or bypass (dim icon) the associated engine.
2. The **left <> right arrows** under the Reverb 2 (violet) icon choose among Room, Medium Chamber, and Plate algorithms. The **arrows** under the Reverb 3 (orange) icon choose between Large Chamber and Hall algorithms.

### ★ TIP

Many engineers use a plate reverb sound on vocals.

1. **Space** is a macro control, and adjusts parameters available for independent editing in the Advanced panel. This control is an ideal

complement to the Reverb Assistant or any presets you load, because it can make a space sound larger (high numbers) or smaller (lower numbers), while retaining the space's sonic character.

2. The **right arrow** opens up the Advanced editing panel, which we'll cover later.

## Advanced Controls

### Creating Your Own Neoverb Presets

With Neoverb's Reverb Assistant, Blend Pad interface, and the included presets, you should be able to get a great sound without having to adjust too many parameters. However, if need be you can also customize Neoverb's advanced parameters within each reverb engine using the Advanced Panel. The following shows the Advanced Panel after opening it. To close it, click on the left-arrow toward the panel's right.



## Sync to Host Tempo

Three of the time-related parameters can synchronize to the host tempo. Click on the associated Note button to toggle a control's calibrations between time and rhythmic note values. The note values for the two Time parameters include all rhythmic values from 128th notes to eight measures, including triplet and dotted values. Pre-Delay includes all rhythmic values (including triplet and dotted) from 128th notes to eighth notes, as well as quarter-note and quarter-note triplet values.



To supplement the parameter descriptions, we've also used the Spectrogram module from iZotope's Insight 2 program to show graphically how these parameters change the sound. This makes it much easier to understand how reverb parameters alter a signal. The spectrogram displays the amount of audio energy by plotting time along the bottom (X-axis), amplitude by height (the Y-axis), and frequency by the depth (Z-axis).

### INSIGHT METERING

The following section includes screenshots of measurements taken using iZotope's Insight plug-in, which is not part of Neoverb. [\*\*Click here to learn more about iZotope Insight.\*\*](#)

## Space, Time, and Size

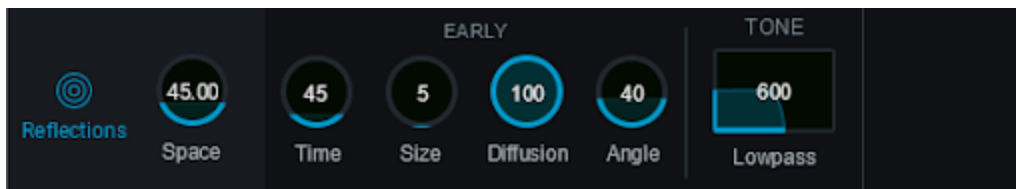
These three controls are interrelated and work the same way for the three reverb engines. **Space** is a macro control that adjusts both the **Time** and **Size** parameters. After finding a general setting with Space, you can then adjust Time and Size individually to edit the sound further. Space controls the full range of Size, so setting Space to minimum or maximum also sets Size to minimum or maximum, respectively. Additionally, Space automatically adjusts Time relative to Size, so that the ratio of Time to Size remains constant.

As a result, the Size and Time settings specified in the Advanced Panel determine how the Space control behaves when the Advanced Panel is folded up. This is handy if you run the Reverb Assistant, call up a preset, or edit the Advanced panel and obtain the sound you want. If you later decide you want the space to sound larger or smaller while retaining the space's sonic character, simply adjust the Space control. Note that the Space control's range varies for the three reverb engines.

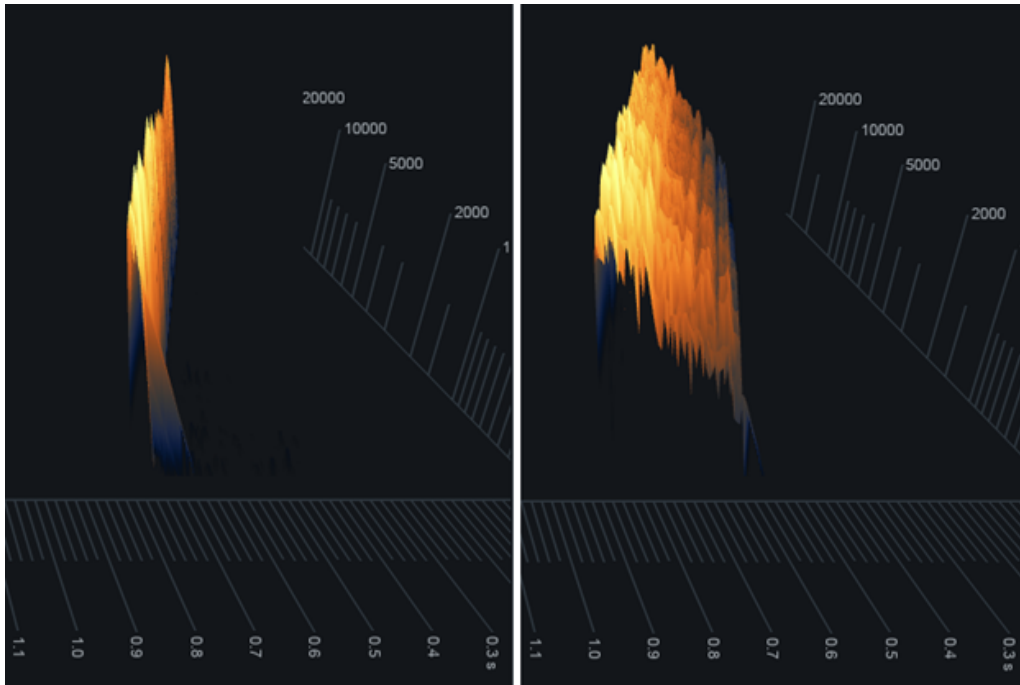
1. Reflections: 36.73 to 250 milliseconds
2. Engine 2: 1.4 to 14 seconds
3. Engine 3: 4.17 to 24 seconds.

## Programming the Reflections Engine (Blue)

These are the initial echoes that a sound creates when it first hits surfaces like walls. As a result, they sound more like discrete echoes than the "wash" of sound that occurs later, as the reverb decays. Because sound travels at approximately one foot per millisecond, the maximum time of 250 ms is equivalent of being in a room where the distance from the nearest reflective surface to the sound source is approximately 250 feet.

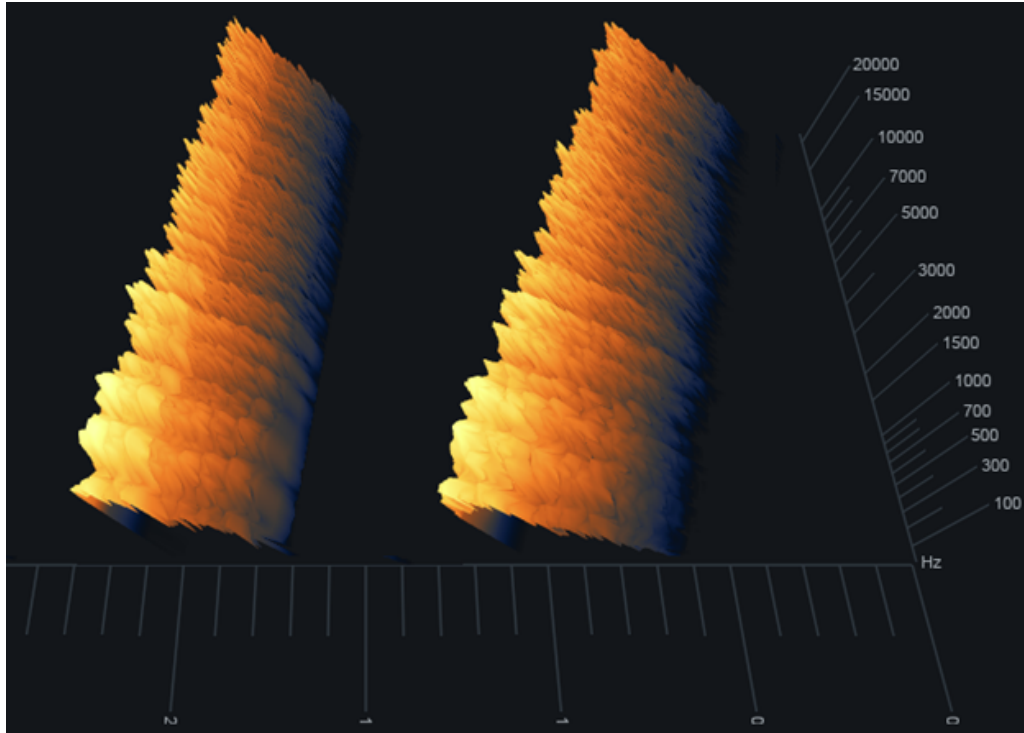


The following image shows the early reflections that result from minimum parameter settings for Space, Time, and Size on the left, and on the right, the early reflections that result from the maximum values for these same parameters. The bottom axis shows time in seconds, so you can see that the early reflections are very short, and don't last long.



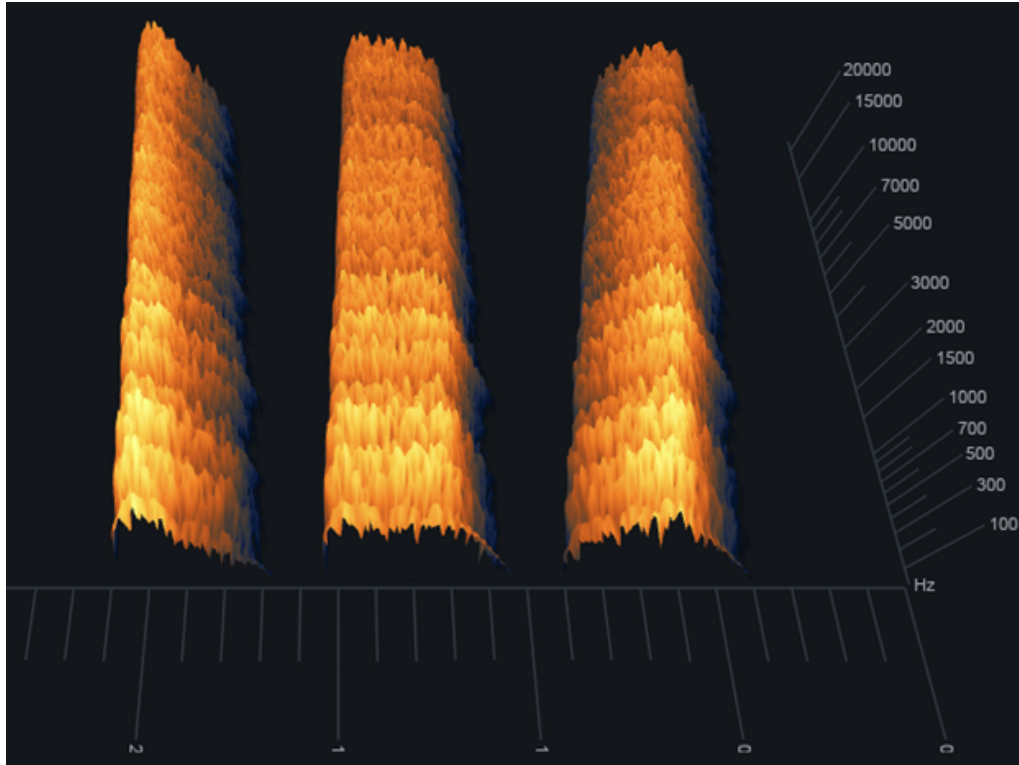
## Diffusion (0 to 100)

With high diffusion, the reflections are more numerous, and clustered together more tightly. With low diffusion, there are fewer reflections, and they're spread further apart. The following image shows a signal with low diffusion on the left, and high diffusion on the right. You can see that the right image looks smoother (note how the divisions between the colored bands aren't as pronounced); it also sounds smoother.



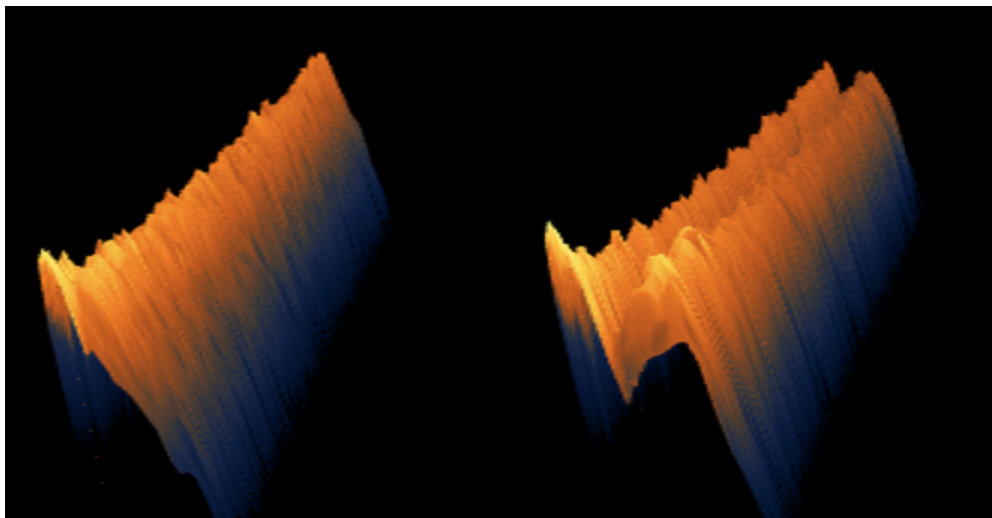
## Angle (0 to 100%)

Angle changes the character and strength of the initial reflections, as shown in the image below. Going from left to right, the Angle settings are 0, 50, and 100.



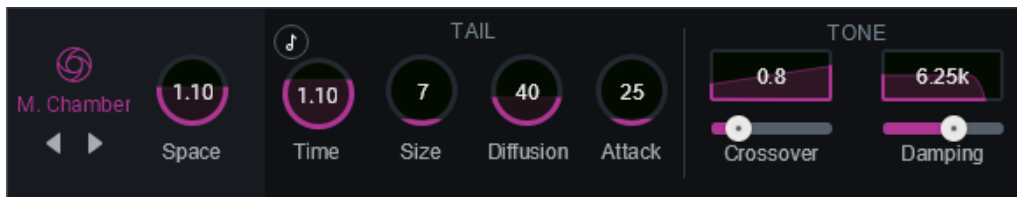
## Lowpass (30 Hz – 20 kHz)

This filter affects the low frequency response with only the later reflections, so there's no effect on the first few reflections. The effect is subtle, and most apparent with angle settings above 75. The images below have the same parameter values, with lowpass set to 200 Hz. The left image's Angle is 0, while the right image's Angle is 100. The reverb in the right image falls off more rapidly.



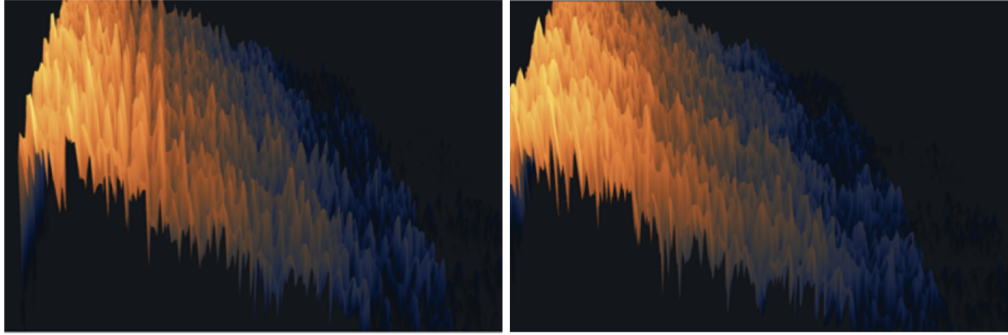
## Programming the Reverb 2 and Reverb 3 Engines (Violet and Orange)

Both engines apply the same parameters to different reverb algorithms. So, we need to describe only one set of controls, because (for example) the decay time will affect how long it takes for the reverb to decay, regardless of the algorithm being used. Unlike the early Reflections, these engines generate myriad echoes of varying time and frequency as they bounce around in a space, until they eventually decay into inaudibility. This produces the “wash” of sound, often called a “tail,” that most people associate with reverb.



### Diffusion (0 to 100)

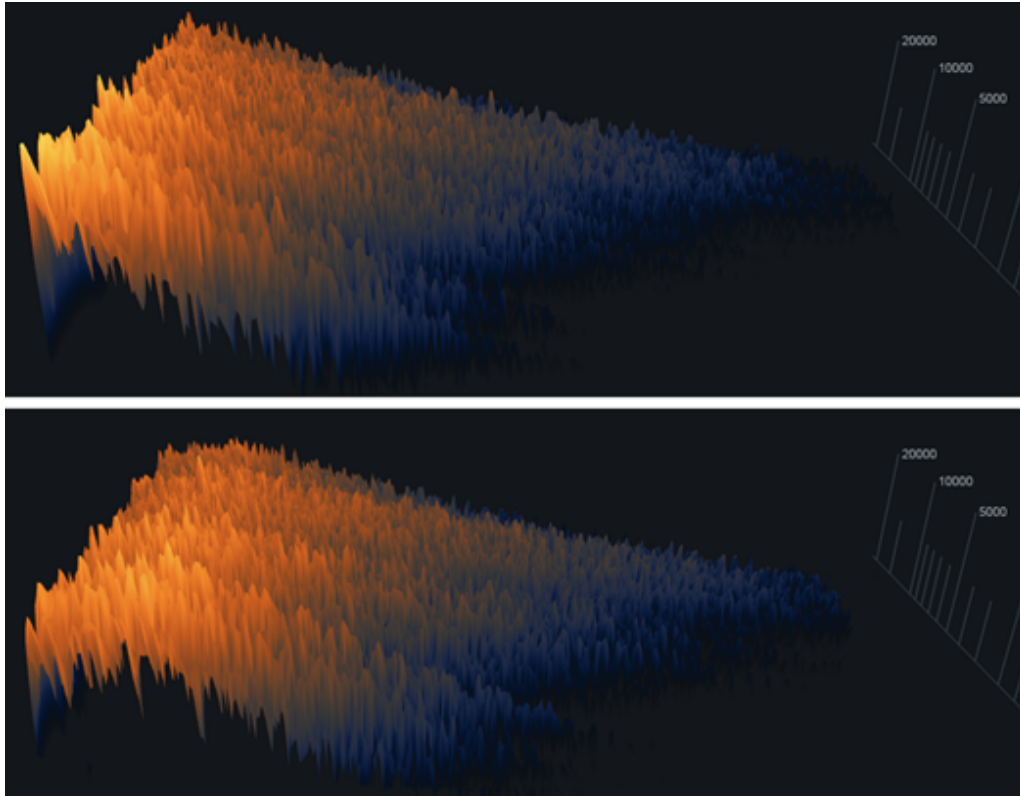
As with the early Reflections, high diffusion means more numerous reflections that are clustered together more tightly. The following image shows reverb with low diffusion at the top, and high diffusion at the bottom. With low diffusion, you can see the “grooves” toward the left that highlight the spaces among reflections; the higher diffusion reflections are packed more tightly together.

**★ TIP**

Using low diffusion for sustained sounds “thins out” the reverb sound somewhat to avoid interfering with the sustain. With percussive sounds, high diffusions give a smooth reverb wash, whereas low diffusion settings sound like discrete echoes bouncing around.

**Attack (0 to 250 ms)**

This is not like pre-delay, but instead specifies how the reverb builds up during its initial onset. The top image below shows 0 Attack. Note how the reverb peaks immediately, and then decays. The lower image shows the effect of maximum Attack. The reverb takes a while to build to its peak before decaying.



★ TIP

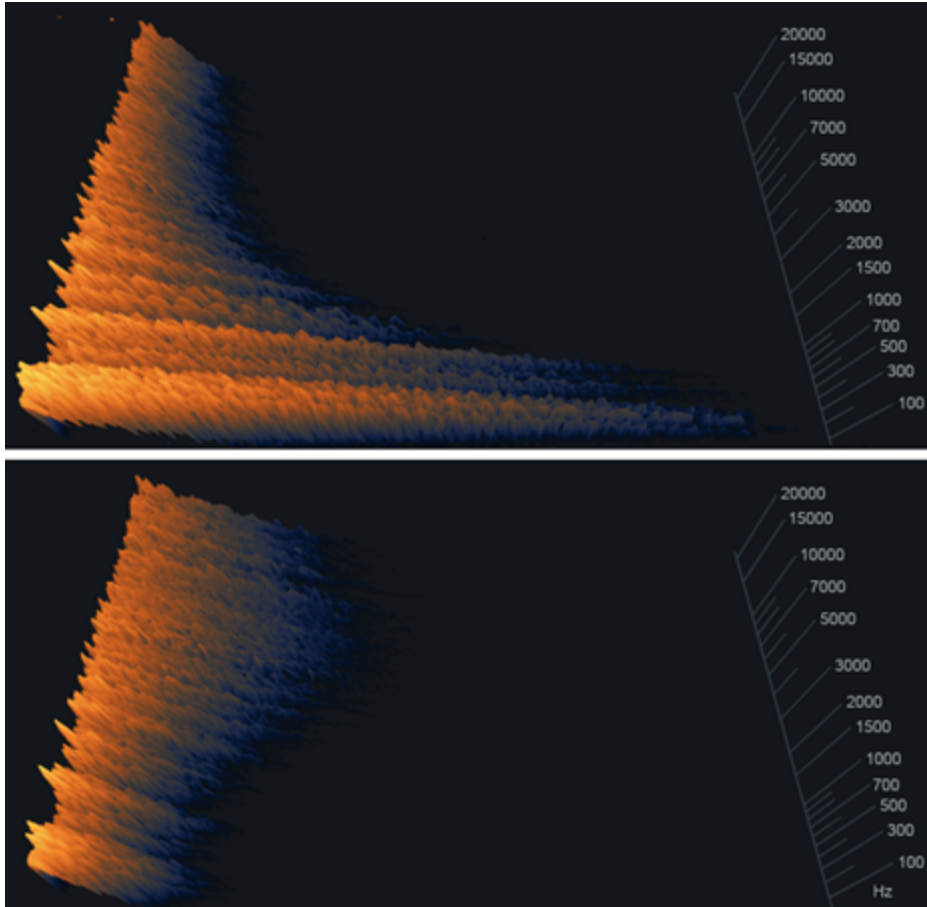
Increasing attack is useful for drums and percussion, when you don't want the reverb to "step on" the initial percussive transient.

## Crossover (20 Hz to 4 kHz) and Balance (0 to 1)

The Room and Hall engines have independent controls over the low- and high-frequency reverb components. For example, you might want a longer high-frequency decay on a diaphanous female EDM vocal to give a more trebly tone, but a lower-frequency reverb on blues guitar for a "meatier" tone.

The **Crossover** parameter's slider adjusts the dividing line between the high and low frequencies. The **Balance** graphic above the slider displays whether the reverb effect is greater at lower or higher frequencies. Edit this by clicking on the graphic, and dragging up or down. At 0, the reverb effect is most prominent at lower frequencies. At 0.5, the reverb effect is equally prominent at all frequencies. At 1.0, the reverb effect is most prominent at high frequencies.

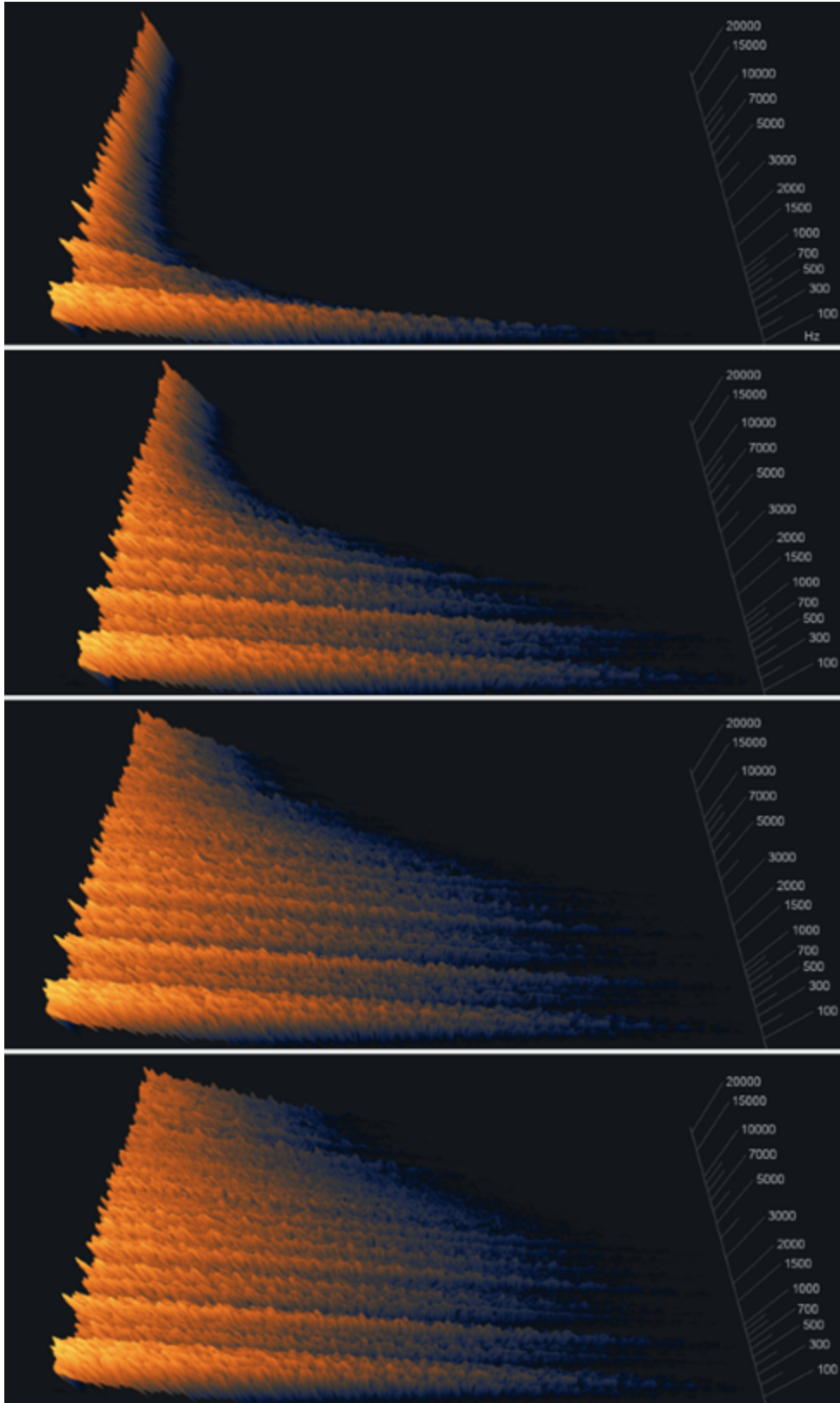
In the following illustration, the top image shows the result of setting the crossover to 2 kHz and Balance to 0. It's obvious that reverb decay is much more prominent below 2 kHz. The bottom image is the same, except Balance is set to 1. Now the high-frequency reverb effect is more prominent.



## Damping Amount (1-11) and Damping Frequency (30 Hz to 20 kHz)

Like Crossover and Balance, these work together. The Damping Amount slider controls the rate at which the reverb loses high frequencies. Lower values shorten the high-frequency decay; higher values lengthen the high-frequency decay. Damping Frequency controls the range over which high frequency losses occur. In a physical space with padded walls and lots of people, the damping frequency is low because high frequencies are readily absorbed. In a room with hard surfaces, high frequencies are not easily absorbed, so the damping frequency is higher.

In the illustration below, all images have a 2 kHz Crossover and 0.5 (equal) Balance between high and low frequencies. The top image shows a 1 kHz damping frequency, which is an extreme amount of damping. Frequencies above 1 kHz decay very quickly. The next image down shows a 5 kHz damping frequency. The third image down shows a 20 kHz damping frequency. All three images have a Damping Amount of 1 (shortest high-frequency decay). The final image has the same parameter settings as the third one down, but Damping Amount is set to 11 (longest high-frequency decay).



# EQ

## Overview

Neoverb has two 3-band EQ modules, one before the reverb (Pre EQ), and one after (Reverb EQ). EQ before and after reverb can optimize the overall sound, as described below.



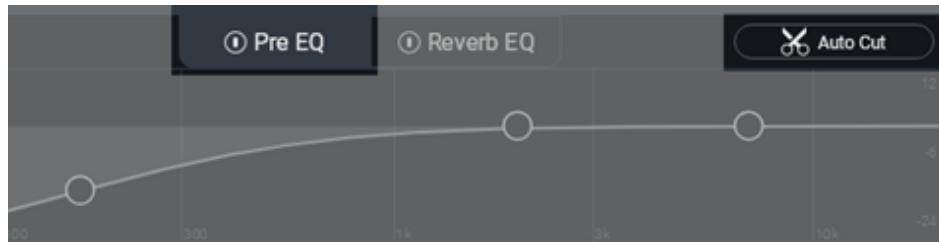
## Pre EQ

Use the Pre-EQ section to:

1. Intelligently listen (via Auto Cut) to your incoming audio and carve away mud, resonances, and harshness in the signal before it enters the reverb.
2. Roll-off low frequencies (such as in a kick drum) before the reverb so that the source doesn't create an excessive amount of low-frequency reverb, which can muddy the sound.
3. Roll-off highs (such as in bright vocals or distorted electric guitar) going into and coming out of the reverb.

## Pre EQ Usage

1. Click on the Pre EQ tab (make sure its Power Button (I) is on), then click on Auto Cut.



2. The Auto Cut label changes to "Waiting for Audio."



3. Choose a section of audio that covers a wide range of frequencies, then start playing back the audio you want Neoverb to analyze. "Waiting for Audio" will change to "Listening." The spectrum

analyzer in the background will display the audio as it plays.



4. Neoverb shows a suggested EQ curve after completing its analysis. The Amount slider scales the amount of cutting EQ. The higher the number, the greater the cut.



#### ★ SHORTCUTS

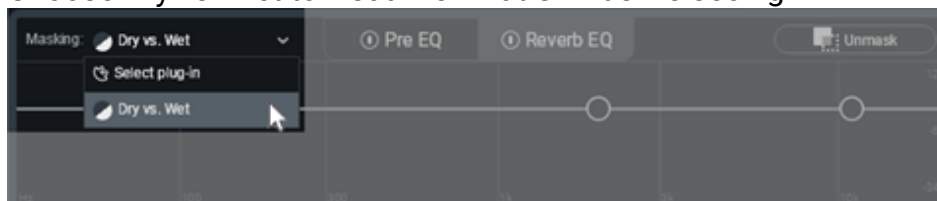
Shift+click anywhere along the slider to jump to that setting. Double-click to set to 100%.

To reset the Auto Cut function, click on the X (close button) to the right of the Amount slider.

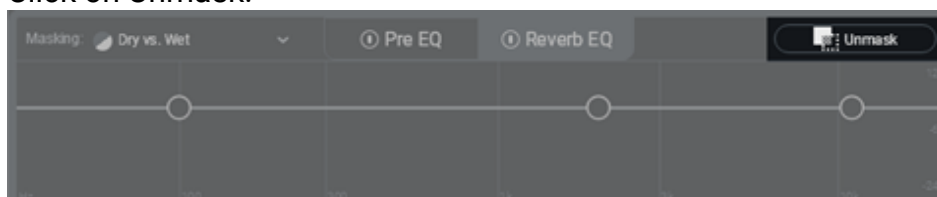
## Reverb EQ

Use the Reverb EQ section to intelligently listen (via Unmask) to your incoming audio and minimize masking effects occurring between the dry and wet signal.

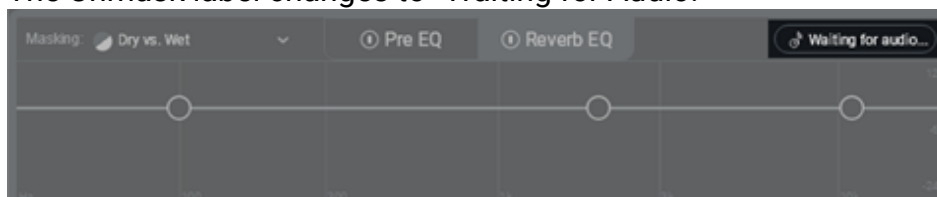
1. Click on the Reverb EQ tab (make sure its Power Button (I) is on). Choose Dry vs. Wet to visualize what Unmask is seeing.



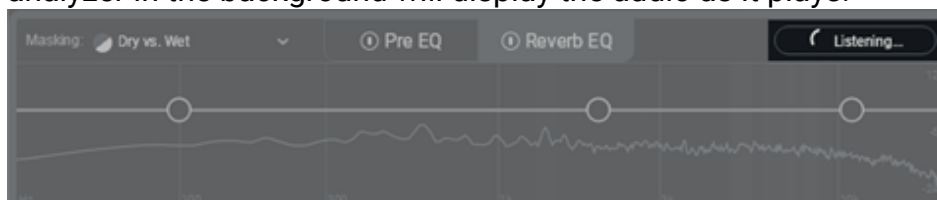
2. Click on Unmask.



3. The Unmask label changes to "Waiting for Audio."



4. Choose a section of audio that covers a wide range of frequencies, then start playing back the audio you want Neoverb to analyze. "Waiting for Audio" will change to "Listening." The spectrum analyzer in the background will display the audio as it plays.



5. After the analysis process, if Neoverb detects masking, it applies a tuned EQ curve to reduce the masking. If there's no significant masking, the display shows "No significant masking detected," and the reverb remains as it was. The Amount slider sets how much influence the EQ settings have over the sound. The higher the

number, the greater the influence.



### ★ SHORTCUTS

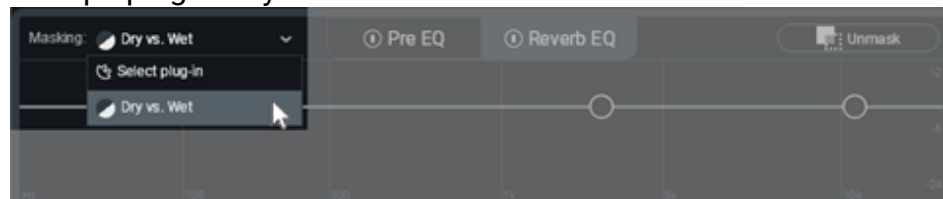
Shift-click anywhere along the slider to jump to that setting. Double-click to set to 100%.

To reset the Unmask function, click on the X (close button) to the right of the Amount slider.

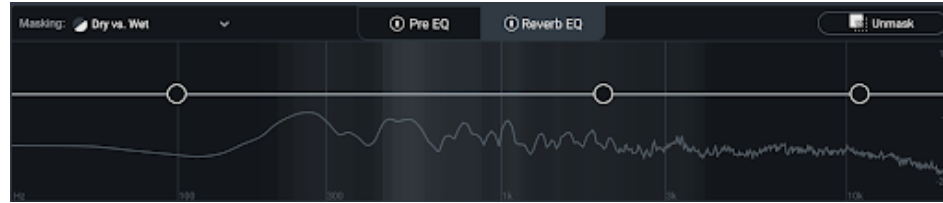
## Masking Meter

Easily keep track of reverb build-up with an intuitive meter that highlights areas you may want to cut from your reverb. Masking Meter also communicates with other iZotope plug-ins (via Inter-Plugin Communication) to show you where your reverb is masking other tracks in your session. Neoverb can communicate over Inter-Plugin Communication with the following iZotope plug-ins: Other Neoverb instances, Neutron 3, Nectar 3, VocalSynth 2, and Relay.

1. Click on the Reverb EQ button
2. Select a source to measure masking against. The options are: Dry vs Wet (of your current track) or select an instance of another iZotope plug-in in your session.



3. Play audio, preferably looped.
4. You will observe white flashes across the spectrum. These highlight frequency ranges where masking has been detected.



5. You can manually EQ regions that have a brighter intensity of flashing (where significant masking is occurring) or press the “Unmask” button to automatically cut in the highlighted problem areas.

## Editing the EQ sections manually

Neoverb’s intelligent EQ setting may produce exactly the sound you want. But, there are also three manually adjustable nodes:

1. Click on an EQ node to select it, and then drag horizontally to change the frequency the EQ will affect, and/or drag up or down to change the amount of boost or cut at the selected frequency.
2. Click on the EQ node handles to the side of the selected node, and then drag right or left to change the filter resonance (or “sharpness”).

### ★ SHORTCUTS

Double-click on a node to return it to the default frequency, with no boost or cut, and a nominal Q setting.

## Low Band

Choose a **Low Shelf** or **Low-Cut** filter response with the Filter Shape Selector switch (located in the lower left of the highlighted section below).

1. The **Low-Shelf** shape starts boosting or cutting below the selected frequency. This eventually levels off to a constant amount of boost or cut. The EQ node handles determine the shelf’s steepness before it levels off. The image below shows the shelf cutting low

frequencies by -10.8 dB, with the attenuation starting at 260 Hz.



2. The **Low-Cut** shape progressively attenuates the audio level below the selected frequency. The EQ node handles set the slope, or how rapidly the audio level falls off below the selected frequency. The slope options are 6, 12, 24, and 48 dB/octave. Note that the filter can only attenuate, not boost, with this shape.



## Mid Band

The Mid stage is a parametric EQ, with three parameters.

1. **Frequency** sets the specific part of the audio spectrum where boosting or cutting occurs.
2. **Gain** (peak/dip) determines the amount of boost or cut at the selected frequency. The image below shows the EQ cutting by -11.8 dB, at a frequency of 802 Hz.
3. **Q** determines the sharpness of the boosting or cutting action. Higher settings affect a small range of the audio spectrum, while lower settings process a broader range.



## High Band

Choose a **High Shelf** or **High-Cut** filter response with the Filter Shape Selector switch (located in the lower left of the highlighted section below).

1. The **High-Shelf** shape (left) starts boosting or cutting the highs above the selected frequency. This eventually levels off to a constant amount of boost or cut. The EQ node handles determine the shelf's steepness before it levels off. The image shows the shelf boosting 6.5 dB, with the boost starting around 1,695 Hz. The Q is fairly broad.



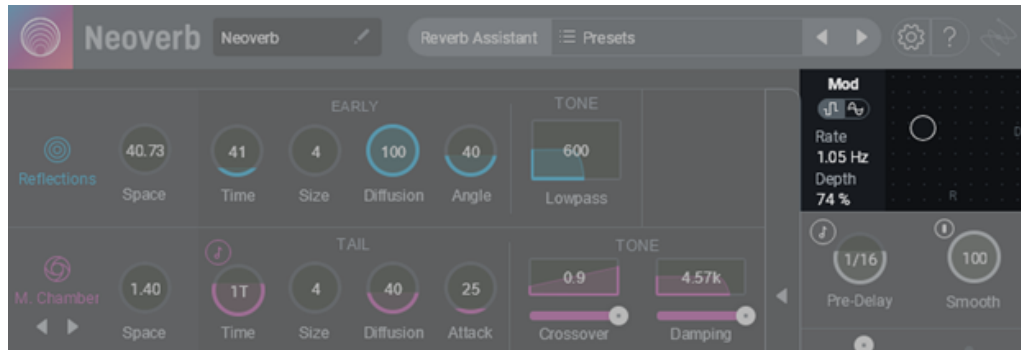
2. The **High-Cut** shape progressively attenuates the audio level above the selected frequency. The EQ node handles set the slope, or how rapidly the audio level falls off above the selected frequency. Note that the filter can only attenuate, not boost, with this shape; the image shows a cut with a 6 dB/octave slope, starting at 1,695 Hz.



## Mod

### Overview

Mod, or Modulation, adds a subtle “animation” to the reverb algorithm itself. The Modulation interface uses an X-Y control pad, like a joystick. Click+drag the node right to increase the modulation Depth, and up to increase the modulation Rate. Note that the Modulation Depth goes up to 125%. This makes it easier to hear the effect when designing presets, after which you can dial back the setting for more subtlety.



There are two modulation shapes, accessed in the module's upper left. RandomFat (left) produces a randomized modulation effect. Pitch (right) creates more of a Doppler-like shift, although it's much more subtle than a traditional Doppler effect.

### ★ SHORTCUTS

Click anywhere in the pad to have the node jump to that setting. Double-click anywhere in the pad to return the Chorus to its default of 25% depth and a rate of 0.48 Hz. Double-click either parameter's text field to type in a specific value.

## Presets

## Presets Menu

Click in the Presets field to access the factory or user presets. The factory presets have the following groups:

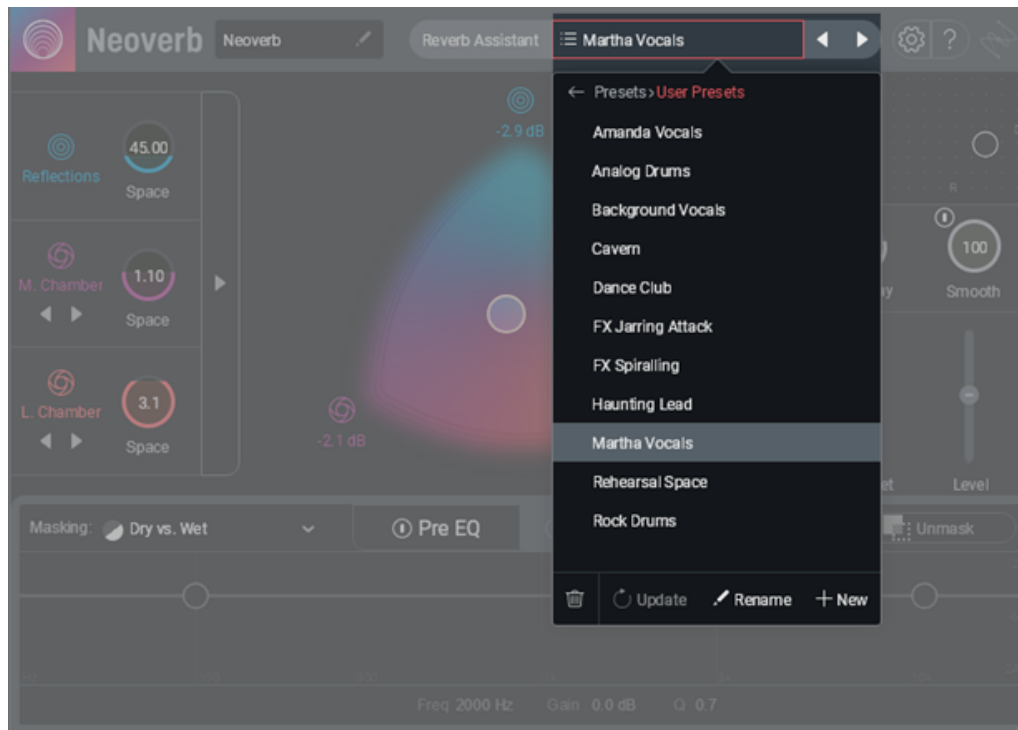
1. **All-Purpose:** General category.
2. **Percussion:** Optimized for percussive instruments, including drums, hand percussion, and melodic percussion (e.g., marimba)
3. **Vocals:** Presets for male, female, and background vocals
4. **Guitar:** Presets for electric and acoustic guitars (both rhythm and lead)
5. **Instrumental/Orchestral:** Presets for instruments that don't fit into the previous categories, and natural-sounding presets optimized for orchestral instruments
6. **Spaces:** Choose these presets for ambiences and surroundings
7. **Experimental:** Whacky, wild, dramatic, crazy, and over-the-top reverbs

### NOTE

The above presets can't be overwritten, but you can save them as User Presets after modifying.

## User Presets

To access the user presets, click the ► to the right of the User Presets folder. This opens the User Presets screen.



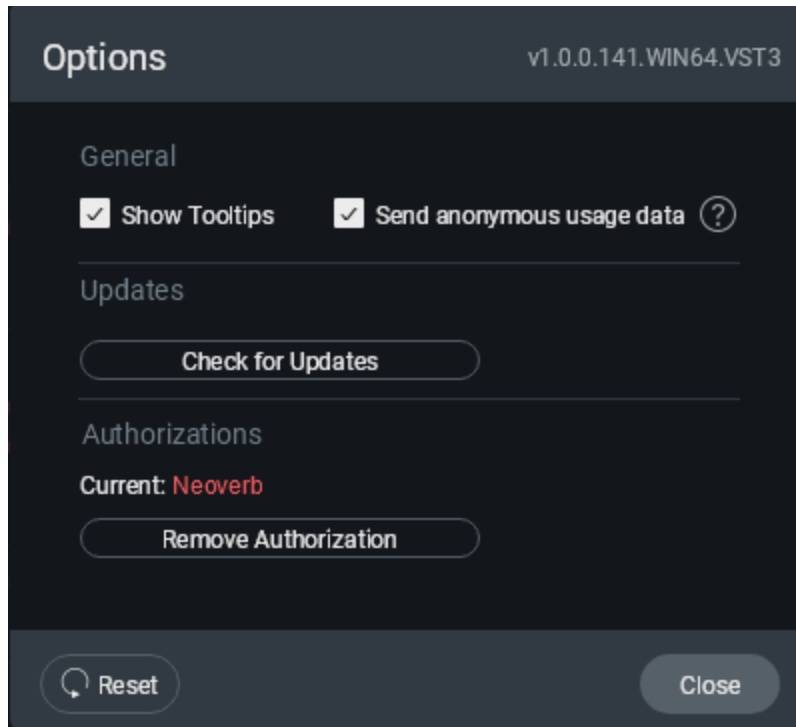
1. **Save a New Preset:** After setting the Neoverb parameters as desired, open the User Preset folder and click on **+New**. Enter the preset name and click on **Save**.
2. **Select a User Preset:** Click on the preset name, then close the Preset selection menu to return to Neoverb.
3. **Delete a User Preset:** Click on the preset name, then click on the Trash icon. To proceed, click on Delete in the confirmation screen.
4. **Rename a User Preset:** Click on the preset name, then click on Rename. Enter the new name in the text field, and hit Return. You do not need to re-save a preset with a new name.
5. **Update a User Preset:** If you call up a preset and make edits, the name in the preset field will be in *Italics*, and preceded by an asterisk. To make these preset changes permanent, click on Update. Do not click on the preset first, because that will re-select the unedited version.

### ★ TIP

User Presets are not part of the Neoverb program itself, so if you need to re-install Neoverb, the User Presets will not be included. Back up the presets you create to a separate file so you can call them up if needed, or for sending to another Neoverb user.

# Options

## General



1. The top **Options** strip shows the plug-in's current revision and format.
2. Check **Show Tooltips** to see a brief parameter description when you hover the mouse over the parameter.
3. Check **Send anonymous usage data** to help us improve our products. Crash reports and data about which sections of the software are used to help us fix bugs, as well as prioritize updates and feature additions. No audio files or music are collected. You can always opt out of sending usage data if you like, but the more data we have, the more it benefits our products.

## Updates

If your computer connects to the internet, click this button to check if Neoverb updates are available.

## Authorizations

If you change computers and want to authorize Neoverb on a different machine, remove the current authorization so that you can re-authorize on the other computer.

## Reset

Click on Reset to set Options to its defaults.

## Customer Care

### iZotope Customer Care policy

iZotope is happy to provide professional technical Customer Care to all registered users absolutely free of charge.

<https://support.izotope.com/hc/en-us>

We also offer valuable pre-sales technical Customer Care to customers who may be interested in purchasing an iZotope product. Before contacting iZotope Customer Care, you can search our **Product Knowledgebase** to see if the solution to your problem has already been published.

### How long does iZotope provide customer support for purchased products

You can email us with any question for 12 months after you buy any iZotope product. Past 12 months, we'll still help you with your account and authorization but will not provide technical support for in-depth product questions. If you need more detailed help on how to use the product, please check out our FAQs and Tutorials.

### How long does iZotope support its products

Although we can't guarantee it, we do our best to keep our products up to date with the operating systems and plug-in hosts that we support. Sometimes, other companies make changes that we're not able to

support, but we actively work with other companies to avoid these sorts of compatibility problems. We also do our best to address bug fixes within the product itself to ensure our products operate in accordance with our specifications.

We will provide software updates for 12 months from product release. After 12 months, no software updates will be provided.

For details on what operating systems and plug-in host software are officially supported for a product, please check that product's Specs page.

## Contacting iZotope Customer Care

For additional help with Neoverb:

1. Check out the Customer Care pages on our web site at [support.izotope.com](https://support.izotope.com)
2. Contact our Customer Care department at [support@izotope.com](mailto:support@izotope.com)

iZotope's highly trained Customer Care team is committed to responding to all requests within one (1) business day and frequently respond faster. Please try to explain your problem with as much detail and clarity as possible. This will ensure our ability to solve your problem accurately, the first time around. Please include all system specs and the build/version of Neoverb that you are using.

Once your Customer Care request is submitted, you will receive a confirmation email from iZotope Customer Care. If you do not receive this email within a few minutes, please check your spam folder and make sure our responses are not getting blocked. To prevent this from happening please add [support@izotope.com](mailto:support@izotope.com) to your list of allowed email addresses.

## International distribution

Customer Care is also available from our international distributors worldwide for any customers who purchased their iZotope products through a certified iZotope distributor.

Check with your local distributor for availability. If you would like help locating your local distributor please contact iZotope Customer Care.

Thanks for using Neoverb!

-The iZotope Team

# License Information

## Table of Contents

1. [\*\*Anti-Grain Geometry\*\*](#)
2. [\*\*Better Enums\*\*](#)
3. [\*\*Bravura\*\*](#)
4. [\*\*C++ Rest SDK\*\*](#)
5. [\*\*Eigen\*\*](#)
6. [\*\*FreeType\*\*](#)
7. [\*\*GLEW\*\*](#)
8. [\*\*gsl\*\*](#)
9. [\*\*IcoMoon\*\*](#)
10. [\*\*Intel® Integrated Performance Primitives \(Intel® IPP\)\*\*](#)
11. [\*\*JsonCpp\*\*](#)
12. [\*\*LibXML2\*\*](#)
13. [\*\*Material Docs Theme\*\*](#)
14. [\*\*nanomsg\*\*](#)
15. [\*\*Netlib numeralgo na10 Aberth's method\*\*](#)
16. [\*\*readerwriterqueue\*\*](#)
17. [\*\*Roboto font family\*\*](#)
18. [\*\*Skia\*\*](#)
19. [\*\*TinyXML\*\*](#)
20. [\*\*Tipue Search\*\*](#)
21. [\*\*vectorize\*\*](#)
22. [\*\*xsimd\*\*](#)
23. [\*\*Yoga\*\*](#)
24. [\*\*zlib\*\*](#)

---

## Anti-Grain Geometry

Version 2.4

Copyright (c) 2002-2005 Maxim Shemanarev (McSeem).

Redistribution and use in source and binary forms, with or without modification, are permitted provided that the following conditions are

met:

1. Redistributions of source code must retain the above copyright notice, this list of conditions and the following disclaimer.
2. Redistributions in binary form must reproduce the above copyright notice, this list of conditions and the following disclaimer in the documentation and/or other materials provided with the distribution.
3. The name of the author may not be used to endorse or promote products derived from this software without specific prior written permission.

THIS SOFTWARE IS PROVIDED BY THE AUTHOR "AS IS" AND ANY EXPRESS OR IMPLIED WARRANTIES, INCLUDING, BUT NOT LIMITED TO, THE IMPLIED WARRANTIES OF MERCHANTABILITY AND FITNESS FOR A PARTICULAR PURPOSE ARE DISCLAIMED. IN NO EVENT SHALL THE AUTHOR BE LIABLE FOR ANY DIRECT, INDIRECT, INCIDENTAL, SPECIAL, EXEMPLARY, OR CONSEQUENTIAL DAMAGES (INCLUDING, BUT NOT LIMITED TO, PROCUREMENT OF SUBSTITUTE GOODS OR SERVICES; LOSS OF USE, DATA, OR PROFITS; OR BUSINESS INTERRUPTION) HOWEVER CAUSED AND ON ANY THEORY OF LIABILITY, WHETHER IN CONTRACT, STRICT LIABILITY, OR TORT (INCLUDING NEGLIGENCE OR OTHERWISE) ARISING IN ANY WAY OUT OF THE USE OF THIS SOFTWARE, EVEN IF ADVISED OF THE POSSIBILITY OF SUCH DAMAGE.

---

## **Better Enums**

Version 0.11.1

Copyright (c) 2012-2016, Anton Bachin. All rights reserved.

Redistribution and use in source and binary forms, with or without modification, are permitted provided that the following conditions are met:

1. Redistributions of source code must retain the above copyright notice, this list of conditions and the following disclaimer.
2. Redistributions in binary form must reproduce the above copyright notice, this list of conditions and the following disclaimer in the documentation and/or other materials provided with the distribution.

THIS SOFTWARE IS PROVIDED BY THE COPYRIGHT HOLDERS AND CONTRIBUTORS "AS IS" AND ANY EXPRESS OR IMPLIED WARRANTIES, INCLUDING, BUT NOT LIMITED TO, THE IMPLIED WARRANTIES OF MERCHANTABILITY AND FITNESS FOR A PARTICULAR PURPOSE ARE DISCLAIMED. IN NO EVENT SHALL THE COPYRIGHT HOLDER OR CONTRIBUTORS BE LIABLE FOR ANY DIRECT, INDIRECT, INCIDENTAL, SPECIAL, EXEMPLARY, OR CONSEQUENTIAL DAMAGES (INCLUDING, BUT NOT LIMITED TO, PROCUREMENT OF SUBSTITUTE GOODS OR SERVICES; LOSS OF USE, DATA, OR PROFITS; OR BUSINESS INTERRUPTION) HOWEVER CAUSED AND ON ANY THEORY OF LIABILITY, WHETHER IN CONTRACT, STRICT LIABILITY, OR TORT (INCLUDING NEGLIGENCE OR OTHERWISE) ARISING IN ANY WAY OUT OF THE USE OF THIS SOFTWARE, EVEN IF ADVISED OF THE POSSIBILITY OF SUCH DAMAGE.

---

## Bravura

Copyright © 2015, Steinberg Media Technologies GmbH  
<http://www.steinberg.net/>, with Reserved Font Name "Bravura".

This Font Software is licensed under the SIL Open Font License, Version 1.1. This license is copied below, and is also available with a FAQ at:  
<http://scripts.sil.org/OFL>

SIL OPEN FONT LICENSE Version 1.1 - 26 February 2007

### PREAMBLE

The goals of the Open Font License (OFL) are to stimulate worldwide development of collaborative font projects, to support the font creation efforts of academic and linguistic communities, and to provide a free

and open framework in which fonts may be shared and improved in partnership with others.

The OFL allows the licensed fonts to be used, studied, modified and redistributed freely as long as they are not sold by themselves. The fonts, including any derivative works, can be bundled, embedded, redistributed and/or sold with any software provided that any reserved names are not used by derivative works. The fonts and derivatives, however, cannot be released under any other type of license. The requirement for fonts to remain under this license does not apply to any document created using the fonts or their derivatives.

## DEFINITIONS

“Font Software” refers to the set of files released by the Copyright Holder(s) under this license and clearly marked as such. This may include source files, build scripts and documentation.

“Reserved Font Name” refers to any names specified as such after the copyright statement(s).

“Original Version” refers to the collection of Font Software components as distributed by the Copyright Holder(s).

“Modified Version” refers to any derivative made by adding to, deleting, or substituting – in part or in whole – any of the components of the Original Version, by changing formats or by porting the Font Software to a new environment.

“Author” refers to any designer, engineer, programmer, technical writer or other person who contributed to the Font Software.

## PERMISSION & CONDITIONS

Permission is hereby granted, free of charge, to any person obtaining a copy of the Font Software, to use, study, copy, merge, embed, modify, redistribute, and sell modified and unmodified copies of the Font Software, subject to the following conditions:

1. Neither the Font Software nor any of its individual components, in Original or Modified Versions, may be sold by itself.
2. Original or Modified Versions of the Font Software may be bundled, redistributed and/or sold with any software, provided that each copy contains the above copyright notice and this license.

These can be included either as stand-alone text files, human-readable headers or in the appropriate machine-readable metadata fields within text or binary files as long as those fields can be easily viewed by the user.

3. No Modified Version of the Font Software may use the Reserved Font Name(s) unless explicit written permission is granted by the corresponding Copyright Holder. This restriction only applies to the primary font name as presented to the users.
4. The name(s) of the Copyright Holder(s) or the Author(s) of the Font Software shall not be used to promote, endorse or advertise any Modified Version, except to acknowledge the contribution(s) of the Copyright Holder(s) and the Author(s) or with their explicit written permission.
5. The Font Software, modified or unmodified, in part or in whole, must be distributed entirely under this license, and must not be distributed under any other license. The requirement for fonts to remain under this license does not apply to any document created using the Font Software.

#### TERMINATION

This license becomes null and void if any of the above conditions are not met.

#### DISCLAIMER

THE FONT SOFTWARE IS PROVIDED "AS IS", WITHOUT WARRANTY OF ANY KIND, EXPRESS OR IMPLIED, INCLUDING BUT NOT LIMITED TO ANY WARRANTIES OF MERCHANTABILITY, FITNESS FOR A PARTICULAR PURPOSE AND NONINFRINGEMENT OF COPYRIGHT, PATENT, TRADEMARK, OR OTHER RIGHT. IN NO EVENT SHALL THE COPYRIGHT HOLDER BE LIABLE FOR ANY CLAIM, DAMAGES OR OTHER LIABILITY, INCLUDING ANY GENERAL, SPECIAL, INDIRECT, INCIDENTAL, OR CONSEQUENTIAL DAMAGES, WHETHER IN AN ACTION OF CONTRACT, TORT OR OTHERWISE, ARISING FROM, OUT OF THE USE OR INABILITY TO USE THE FONT SOFTWARE OR FROM OTHER DEALINGS IN THE FONT SOFTWARE.

---

## **C++ Rest SDK**

Version 2.10.15

## Main Library:

Copyright (c) 2014, Peter Thorson. All rights reserved.

Redistribution and use in source and binary forms, with or without modification, are permitted provided that the following conditions are met:

1. Redistributions of source code must retain the above copyright notice, this list of conditions and the following disclaimer.
2. Redistributions in binary form must reproduce the above copyright notice, this list of conditions and the following disclaimer in the documentation and/or other materials provided with the distribution.
3. Neither the name of the WebSocket++ Project nor the names of its contributors may be used to endorse or promote products derived from this software without specific prior written permission.

THIS SOFTWARE IS PROVIDED BY THE COPYRIGHT HOLDERS AND CONTRIBUTORS "AS IS" AND ANY EXPRESS OR IMPLIED WARRANTIES, INCLUDING, BUT NOT LIMITED TO, THE IMPLIED WARRANTIES OF MERCHANTABILITY AND FITNESS FOR A PARTICULAR PURPOSE ARE DISCLAIMED. IN NO EVENT SHALL PETER THORSON BE LIABLE FOR ANY DIRECT, INDIRECT, INCIDENTAL, SPECIAL, EXEMPLARY, OR CONSEQUENTIAL DAMAGES (INCLUDING, BUT NOT LIMITED TO, PROCUREMENT OF SUBSTITUTE GOODS OR SERVICES; LOSS OF USE, DATA, OR PROFITS; OR BUSINESS INTERRUPTION) HOWEVER CAUSED AND ON ANY THEORY OF LIABILITY, WHETHER IN CONTRACT, STRICT LIABILITY, OR TORT (INCLUDING NEGLIGENCE OR OTHERWISE) ARISING IN ANY WAY OUT OF THE USE OF THIS SOFTWARE, EVEN IF ADVISED OF THE POSSIBILITY OF SUCH DAMAGE.

## Bundled Libraries:

\*\*\*\*\* Base 64 Library (base64/base64.hpp) \*\*\*\*\*

base64.hpp is a repackaging of the base64.cpp and base64.h files into a single header suitable for use as a header only library. This conversion was done by Peter Thorson ([webmaster@zaphoyd.com](mailto:webmaster@zaphoyd.com)) in 2012. All modifications to the code are redistributed under the same license as the original, which is listed below.

base64.cpp and base64.h

Copyright (C) 2004-2008 René Nyffenegger

This source code is provided 'as-is', without any express or implied warranty. In no event will the author be held liable for any damages arising from the use of this software.

Permission is granted to anyone to use this software for any purpose, including commercial applications, and to alter it and redistribute it freely, subject to the following restrictions:

1. The origin of this source code must not be misrepresented; you must not claim that you wrote the original source code. If you use this source code in a product, an acknowledgment in the product documentation would be appreciated but is not required.
2. Altered source versions must be plainly marked as such, and must not be misrepresented as being the original source code.
3. This notice may not be removed or altered from any source distribution.

René Nyffenegger [rene.nyffenegger@adp-gmbh.ch](mailto:rene.nyffenegger@adp-gmbh.ch)

\*\*\*\*\* SHA1 Library (sha1/sha1.hpp) \*\*\*\*\*

sha1.hpp is a repackaging of the sha1.cpp and sha1.h files from the shallsha1 library (<http://code.google.com/p/smallsha1/>) into a single header suitable for use as a header only library. This conversion was done by Peter Thorson ([webmaster@zaphoyd.com](mailto:webmaster@zaphoyd.com)) in 2013. All modifications to the code are redistributed under the same license as the original, which is listed below.

Copyright (c) 2011, Micael Hildenborg  
All rights reserved.

Redistribution and use in source and binary forms, with or without modification, are permitted provided that the following conditions are met:

1. Redistributions of source code must retain the above copyright

- notice, this list of conditions and the following disclaimer.
2. Redistributions in binary form must reproduce the above copyright notice, this list of conditions and the following disclaimer in the documentation and/or other materials provided with the distribution.
  3. Neither the name of Micael Hildenborg nor the names of its contributors may be used to endorse or promote products derived from this software without specific prior written permission.

THIS SOFTWARE IS PROVIDED BY Micael Hildenborg "AS IS" AND ANY EXPRESS OR IMPLIED WARRANTIES, INCLUDING, BUT NOT LIMITED TO, THE IMPLIED WARRANTIES OF MERCHANTABILITY AND FITNESS FOR A PARTICULAR PURPOSE ARE DISCLAIMED. IN NO EVENT SHALL Micael Hildenborg BE LIABLE FOR ANY DIRECT, INDIRECT, INCIDENTAL, SPECIAL, EXEMPLARY, OR CONSEQUENTIAL DAMAGES (INCLUDING, BUT NOT LIMITED TO, PROCUREMENT OF SUBSTITUTE GOODS OR SERVICES; LOSS OF USE, DATA, OR PROFITS; OR BUSINESS INTERRUPTION) HOWEVER CAUSED AND ON ANY THEORY OF LIABILITY, WHETHER IN CONTRACT, STRICT LIABILITY, OR TORT (INCLUDING NEGLIGENCE OR OTHERWISE) ARISING IN ANY WAY OUT OF THE USE OF THIS SOFTWARE, EVEN IF ADVISED OF THE POSSIBILITY OF SUCH DAMAGE.

\*\*\*\*\* MD5 Library (common/md5.hpp) \*\*\*\*\*

md5.hpp is a reformulation of the md5.h and md5.c code from <http://www.opensource.apple.com/source/cups/cups-59/cups/md5.c> to allow it to function as a component of a header only library. This conversion was done by Peter Thorson ([webmaster@zaphoyd.com](mailto:webmaster@zaphoyd.com)) in 2012 for the WebSocket++ project. The changes are released under the same license as the original (listed below)

Copyright (C) 1999, 2002 Aladdin Enterprises. All rights reserved.

This software is provided 'as-is', without any express or implied warranty. In no event will the authors be held liable for any damages arising from the use of this software.

Permission is granted to anyone to use this software for any purpose, including commercial applications, and to alter it and redistribute it freely, subject to the following restrictions:

1. The origin of this software must not be misrepresented; you must not claim that you wrote the original software. If you use this

- software in a product, an acknowledgment in the product documentation would be appreciated but is not required.
2. Altered source versions must be plainly marked as such, and must not be misrepresented as being the original software.
  3. This notice may not be removed or altered from any source distribution.

L. Peter Deutsch  
**ghost@aladdin.com**

\*\*\*\*\* UTF8 Validation logic (utf8\_validation.hpp) \*\*\*\*\*  
utf8\_validation.hpp is adapted from code originally written by Bjoern Hoehrmann **bjoern@hoehrmann.de**. See **<http://bjoern.hoehrmann.de/utf-8/decoder/dfa/>** for details.

The original license:

Copyright (c) 2008-2009 Bjoern Hoehrmann **bjoern@hoehrmann.de**

Permission is hereby granted, free of charge, to any person obtaining a copy of this software and associated documentation files (the "Software"), to deal in the Software without restriction, including without limitation the rights to use, copy, modify, merge, publish, distribute, sublicense, and/or sell copies of the Software, and to permit persons to whom the Software is furnished to do so, subject to the following conditions:

The above copyright notice and this permission notice shall be included in all copies or substantial portions of the Software.

THE SOFTWARE IS PROVIDED "AS IS", WITHOUT WARRANTY OF ANY KIND, EXPRESS OR IMPLIED, INCLUDING BUT NOT LIMITED TO THE WARRANTIES OF MERCHANTABILITY, FITNESS FOR A PARTICULAR PURPOSE AND NONINFRINGEMENT. IN NO EVENT SHALL THE AUTHORS OR COPYRIGHT HOLDERS BE LIABLE FOR ANY CLAIM, DAMAGES OR OTHER LIABILITY, WHETHER IN AN ACTION OF CONTRACT, TORT OR OTHERWISE, ARISING FROM, OUT OF OR IN CONNECTION WITH THE SOFTWARE OR THE USE OR OTHER DEALINGS IN THE SOFTWARE.

---

## Eigen

Version 3.4.99

Distributed under the **Mozilla Public License v2.0 (MPLv2.0)**.

Full text of the license is available here: **<https://www.mozilla.org/en-US/MPL/2.0/>**

To receive a copy of the source code for the Eigen library distributed with this product under the under the terms of the MPLv2.0 please contact **[dev-support@izotope.com](mailto:dev-support@izotope.com)**.

---

## FreeType

Version 2.4.6

Portions of this software are copyright © 2011 The FreeType Project (**[www.freetype.org](http://www.freetype.org)**). All rights reserved.

---

## GLEW

The OpenGL Extension Wrangler Library  
Copyright (C) 2002-2008, Milan Ikits <[milan\\_ikits@ieee.org](mailto:milan_ikits@ieee.org)>  
Copyright (C) 2002-2008, Marcelo E. Magallon <[mmagallo@debian.org](mailto:mmagallo@debian.org)>  
Copyright (C) 2002, Lev Povalahev  
All rights reserved.

Redistribution and use in source and binary forms, with or without modification, are permitted provided that the following conditions are met:

1. Redistributions of source code must retain the above copyright notice, this list of conditions and the following disclaimer.
2. Redistributions in binary form must reproduce the above copyright notice, this list of conditions and the following disclaimer in the

documentation and/or other materials provided with the distribution.

3. The name of the author may be used to endorse or promote products derived from this software without specific prior written permission.

THIS SOFTWARE IS PROVIDED BY THE COPYRIGHT HOLDERS AND CONTRIBUTORS "AS IS" AND ANY EXPRESS OR IMPLIED WARRANTIES, INCLUDING, BUT NOT LIMITED TO, THE IMPLIED WARRANTIES OF MERCHANTABILITY AND FITNESS FOR A PARTICULAR PURPOSE ARE DISCLAIMED. IN NO EVENT SHALL THE COPYRIGHT OWNER OR CONTRIBUTORS BE LIABLE FOR ANY DIRECT, INDIRECT, INCIDENTAL, SPECIAL, EXEMPLARY, OR CONSEQUENTIAL DAMAGES (INCLUDING, BUT NOT LIMITED TO, PROCUREMENT OF SUBSTITUTE GOODS OR SERVICES; LOSS OF USE, DATA, OR PROFITS; OR BUSINESS INTERRUPTION) HOWEVER CAUSED AND ON ANY THEORY OF LIABILITY, WHETHER IN CONTRACT, STRICT LIABILITY, OR TORT (INCLUDING NEGLIGENCE OR OTHERWISE) ARISING IN ANY WAY OUT OF THE USE OF THIS SOFTWARE, EVEN IF ADVISED OF THE POSSIBILITY OF SUCH DAMAGE.

Mesa 3-D graphics library Version: 7.0

Copyright (C) 1999-2007 Brian Paul All Rights Reserved.

Permission is hereby granted, free of charge, to any person obtaining a copy of this software and associated documentation files (the "Software"), to deal in the Software without restriction, including without limitation the rights to use, copy, modify, merge, publish, distribute, sublicense, and/or sell copies of the Software, and to permit persons to whom the Software is furnished to do so, subject to the following conditions:

The above copyright notice and this permission notice shall be included in all copies or substantial portions of the Software.

THE SOFTWARE IS PROVIDED "AS IS", WITHOUT WARRANTY OF ANY KIND, EXPRESS OR IMPLIED, INCLUDING BUT NOT LIMITED TO THE WARRANTIES OF MERCHANTABILITY, FITNESS FOR A PARTICULAR PURPOSE AND NONINFRINGEMENT. IN NO EVENT SHALL BRIAN PAUL BE LIABLE FOR ANY CLAIM, DAMAGES OR OTHER LIABILITY, WHETHER IN AN ACTION OF CONTRACT, TORT OR OTHERWISE, ARISING FROM,

OUT OF OR IN CONNECTION WITH THE SOFTWARE OR THE USE OR OTHER DEALINGS IN THE SOFTWARE.

Copyright (c) 2007 The Khronos Group Inc.

Permission is hereby granted, free of charge, to any person obtaining a copy of this software and/or associated documentation files (the "Materials"), to deal in the Materials without restriction, including without limitation the rights to use, copy, modify, merge, publish, distribute, sublicense, and/or sell copies of the Materials, and to permit persons to whom the Materials are furnished to do so, subject to the following conditions:

The above copyright notice and this permission notice shall be included in all copies or substantial portions of the Materials.

THE MATERIALS ARE PROVIDED "AS IS", WITHOUT WARRANTY OF ANY KIND, EXPRESS OR IMPLIED, INCLUDING BUT NOT LIMITED TO THE WARRANTIES OF MERCHANTABILITY, FITNESS FOR A PARTICULAR PURPOSE AND NONINFRINGEMENT. IN NO EVENT SHALL THE AUTHORS OR COPYRIGHT HOLDERS BE LIABLE FOR ANY CLAIM, DAMAGES OR OTHER LIABILITY, WHETHER IN AN ACTION OF CONTRACT, TORT OR OTHERWISE, ARISING FROM, OUT OF OR IN CONNECTION WITH THE MATERIALS OR THE USE OR OTHER DEALINGS IN THE MATERIALS.

---

## **gsl**

Copyright (c) 2015 Microsoft Corporation. All rights reserved.

This code is licensed under the MIT License (MIT).

Permission is hereby granted, free of charge, to any person obtaining a copy of this software and associated documentation files (the "Software"), to deal in the Software without restriction, including without limitation the rights to use, copy, modify, merge, publish, distribute, sublicense, and/or sell copies of the Software, and to permit persons to whom the Software is furnished to do so, subject to the following conditions:

The above copyright notice and this permission notice shall be included in all copies or substantial portions of the Software.

THE SOFTWARE IS PROVIDED "AS IS", WITHOUT WARRANTY OF ANY KIND, EXPRESS OR IMPLIED, INCLUDING BUT NOT LIMITED TO THE WARRANTIES OF MERCHANTABILITY, FITNESS FOR A PARTICULAR PURPOSE AND NONINFRINGEMENT. IN NO EVENT SHALL THE AUTHORS OR COPYRIGHT HOLDERS BE LIABLE FOR ANY CLAIM, DAMAGES OR OTHER LIABILITY, WHETHER IN AN ACTION OF CONTRACT, TORT OR OTHERWISE, ARISING FROM, OUT OF OR IN CONNECTION WITH THE SOFTWARE OR THE USE OR OTHER DEALINGS IN THE SOFTWARE.

---

## IcoMoon

IcoMoon-Free licensed under: **CC BY 4.0**

---

## Intel® Integrated Performance Primitives (Intel® IPP)

Version 2019.0.5

LIMITATION OF LIABILITY. IN NO EVENT WILL INTEL BE LIABLE FOR ANY DIRECT, INDIRECT, INCIDENTAL, SPECIAL, EXEMPLARY, OR CONSEQUENTIAL DAMAGES (INCLUDING, BUT NOT LIMITED TO, PROCUREMENT OF SUBSTITUTE GOODS OR SERVICES; LOSS OF USE, DATA, OR PROFITS; OR BUSINESS INTERRUPTION) HOWEVER CAUSED AND ON ANY THEORY OF LIABILITY, WHETHER IN CONTRACT, STRICT LIABILITY, OR TORT (INCLUDING NEGLIGENCE OR OTHERWISE) ARISING IN ANY WAY OUT OF THE USE OF THIS SOFTWARE, EVEN IF ADVISED OF THE POSSIBILITY OF SUCH DAMAGE. YOU AGREE TO INDEMNIFY AND HOLD INTEL HARMLESS AGAINST ANY CLAIMS AND EXPENSES RESULTING FROM YOUR USE OR UNAUTHORIZED USE OF THE SOFTWARE.

No support. Intel may make changes to the Software, at any time without notice, and is not obligated to support, update or provide training for the Software.

Termination. Intel may terminate your right to use the Software in the event of your breach of this Agreement and you fail to cure the breach within a reasonable period of time.

Feedback. Should you provide Intel with comments, modifications, corrections, enhancements or other input (“Feedback”) related to the Software Intel will be free to use, disclose, reproduce, license or otherwise distribute or exploit the Feedback in its sole discretion without any obligations or restrictions of any kind, including without limitation, intellectual property rights or licensing obligations.

Compliance with laws. You agree to comply with all relevant laws and regulations governing your use, transfer, import or export (or prohibition thereof) of the Software.

Governing law. All disputes will be governed by the laws of the United States of America and the State of Delaware without reference to conflict of law principles and subject to the exclusive jurisdiction of the state or federal courts sitting in the State of Delaware, and each party agrees that it submits to the personal jurisdiction and venue of those courts and waives any objections. The United Nations Convention on Contracts for the International Sale of Goods (1980) is specifically excluded and will not apply to the Software.

*Other names and brands may be claimed as the property of others.*

---

## **JsonCpp**

Version 1.2.1

Copyright (c) 2007-2010 Baptiste Lepilleur and The JsonCpp Authors

Permission is hereby granted, free of charge, to any person obtaining a copy of this software and associated documentation files (the “Software”), to deal in the Software without restriction, including without limitation the rights to use, copy, modify, merge, publish, distribute, sublicense, and/or sell copies of the Software, and to permit persons to whom the Software is furnished to do so, subject to the following conditions:

The above copyright notice and this permission notice shall be included in all copies or substantial portions of the Software.

THE SOFTWARE IS PROVIDED “AS IS”, WITHOUT WARRANTY OF ANY KIND, EXPRESS OR IMPLIED, INCLUDING BUT NOT LIMITED TO THE WARRANTIES OF MERCHANTABILITY, FITNESS FOR A PARTICULAR

PURPOSE AND NONINFRINGEMENT. IN NO EVENT SHALL THE AUTHORS OR COPYRIGHT HOLDERS BE LIABLE FOR ANY CLAIM, DAMAGES OR OTHER LIABILITY, WHETHER IN AN ACTION OF CONTRACT, TORT OR OTHERWISE, ARISING FROM, OUT OF OR IN CONNECTION WITH THE SOFTWARE OR THE USE OR OTHER DEALINGS IN THE SOFTWARE.

---

## LibXML2

Version 2.7.8

Except where otherwise noted in the source code (e.g. the files hash.c, list.c and the trio files, which are covered by a similar licence but with different Copyright notices) all the files are:

Copyright (C) 1998-2003 Daniel Veillard. All Rights Reserved.

Permission is hereby granted, free of charge, to any person obtaining a copy of this software and associated documentation files (the "Software"), to deal in the Software without restriction, including without limitation the rights to use, copy, modify, merge, publish, distribute, sublicense, and/or sell copies of the Software, and to permit persons to whom the Software is furnished to do so, subject to the following conditions:

The above copyright notice and this permission notice shall be included in all copies or substantial portions of the Software.

THE SOFTWARE IS PROVIDED "AS IS", WITHOUT WARRANTY OF ANY KIND, EXPRESS OR IMPLIED, INCLUDING BUT NOT LIMITED TO THE WARRANTIES OF MERCHANTABILITY, FITNESS FOR A PARTICULAR PURPOSE AND NONINFRINGEMENT. IN NO EVENT SHALL THE DANIEL VEILLARD BE LIABLE FOR ANY CLAIM, DAMAGES OR OTHER LIABILITY, WHETHER IN AN ACTION OF CONTRACT, TORT OR OTHERWISE, ARISING FROM, OUT OF OR IN CONNECTION WITH THE SOFTWARE OR THE USE OR OTHER DEALINGS IN THE SOFTWARE.

Except as contained in this notice, the name of Daniel Veillard shall not be used in advertising or otherwise to promote the sale, use or other dealings in this Software without prior written authorization from him.

---

## Material Docs Theme

Copyright (c) 2016 Digitalcraftsman [digitalcraftsman@protonmail.com](mailto:digitalcraftsman@protonmail.com)

Copyright (c) 2016 Martin Donath [martin.donath@squidfunk.com](mailto:martin.donath@squidfunk.com)

Permission is hereby granted, free of charge, to any person obtaining a copy of this software and associated documentation files (the “Software”), to deal in the Software without restriction, including without limitation the rights to use, copy, modify, merge, publish, distribute, sublicense, and/or sell copies of the Software, and to permit persons to whom the Software is furnished to do so, subject to the following conditions:

The above copyright notice and this permission notice shall be included in all copies or substantial portions of the Software.

THE SOFTWARE IS PROVIDED “AS IS”, WITHOUT WARRANTY OF ANY KIND, EXPRESS OR IMPLIED, INCLUDING BUT NOT LIMITED TO THE WARRANTIES OF MERCHANTABILITY, FITNESS FOR A PARTICULAR PURPOSE AND NON-INFRINGEMENT. IN NO EVENT SHALL THE AUTHORS OR COPYRIGHT HOLDERS BE LIABLE FOR ANY CLAIM, DAMAGES OR OTHER LIABILITY, WHETHER IN AN ACTION OF CONTRACT, TORT OR OTHERWISE, ARISING FROM, OUT OF OR IN CONNECTION WITH THE SOFTWARE OR THE USE OR OTHER DEALINGS IN THE SOFTWARE.

---

## nanomsg

Version 0.5-beta

Copyright (c) 2012-2013 Martin Sustrik All rights reserved.

Copyright (c) 2013 GoPivotal, Inc. All rights reserved.

Permission is hereby granted, free of charge, to any person obtaining a copy of this software and associated documentation files (the “Software”), to deal in the Software without restriction, including without limitation the rights to use, copy, modify, merge, publish, distribute, sublicense, and/or sell copies of the Software, and to permit persons to whom the Software is furnished to do so, subject to the following conditions:

The above copyright notice and this permission notice shall be included in all copies or substantial portions of the Software.

THE SOFTWARE IS PROVIDED "AS IS", WITHOUT WARRANTY OF ANY KIND, EXPRESS OR IMPLIED, INCLUDING BUT NOT LIMITED TO THE WARRANTIES OF MERCHANTABILITY, FITNESS FOR A PARTICULAR PURPOSE AND NONINFRINGEMENT. IN NO EVENT SHALL THE AUTHORS OR COPYRIGHT HOLDERS BE LIABLE FOR ANY CLAIM, DAMAGES OR OTHER LIABILITY, WHETHER IN AN ACTION OF CONTRACT, TORT OR OTHERWISE, ARISING FROM, OUT OF OR IN CONNECTION WITH THE SOFTWARE OR THE USE OR OTHER DEALINGS IN THE SOFTWARE.

"nanomsg" is a trademark of Martin Sustrik.

---

## Netlib numeralgo na10 Aberth's method

All the software contained in this library is protected by copyright. Permission to use, copy, modify, and distribute this software for any purpose without fee is hereby granted, provided that this entire notice is included in all copies of any software which is or includes a copy or modification of this software and in all copies of the supporting documentation for such software.

THIS SOFTWARE IS BEING PROVIDED "AS IS", WITHOUT ANY EXPRESS OR IMPLIED WARRANTY. IN NO EVENT, NEITHER THE AUTHORS, NOR THE PUBLISHER, NOR ANY MEMBER OF THE EDITORIAL BOARD OF THE JOURNAL "NUMERICAL ALGORITHMS", NOR ITS EDITOR-IN-CHIEF, BE LIABLE FOR ANY ERROR IN THE SOFTWARE, ANY MISUSE OF IT OR ANY DAMAGE ARISING OUT OF ITS USE. THE ENTIRE RISK OF USING THE SOFTWARE LIES WITH THE PARTY DOING SO.

ANY USE OF THE SOFTWARE CONSTITUTES ACCEPTANCE OF THE TERMS OF THE ABOVE STATEMENT.

AUTHOR:

1. DARIO ANDREA  
UNIVERSITY OF PISA, ITALY  
E-MAIL: [bini@dm.unipi.it](mailto:bini@dm.unipi.it)

## REFERENCE:

1. NUMERICAL COMPUTATION OF POLYNOMIAL ZEROS BY MEANS OF ABERTH'S METHOD NUMERICAL ALGORITHMS, 13 (1996), PP. 179-200

## SOFTWARE REVISION DATE:

1. JUNE, 1996

## SOFTWARE LANGUAGE:

1. FORTRAN

---

## readerwriterqueue

Copyright (c) 2013-2015, Cameron Desrochers All rights reserved.

Redistribution and use in source and binary forms, with or without modification, are permitted provided that the following conditions are met:

1. Redistributions of source code must retain the above copyright notice, this list of conditions and the following disclaimer.
2. Redistributions in binary form must reproduce the above copyright notice, this list of conditions and the following disclaimer in the documentation and/or other materials provided with the distribution.

THIS SOFTWARE IS PROVIDED BY THE COPYRIGHT HOLDERS AND CONTRIBUTORS "AS IS" AND ANY EXPRESS OR IMPLIED WARRANTIES, INCLUDING, BUT NOT LIMITED TO, THE IMPLIED WARRANTIES OF MERCHANTABILITY AND FITNESS FOR A PARTICULAR PURPOSE ARE DISCLAIMED. IN NO EVENT SHALL THE COPYRIGHT HOLDER OR CONTRIBUTORS BE LIABLE FOR ANY DIRECT, INDIRECT, INCIDENTAL, SPECIAL, EXEMPLARY, OR CONSEQUENTIAL DAMAGES (INCLUDING, BUT NOT LIMITED TO, PROCUREMENT OF SUBSTITUTE GOODS OR SERVICES; LOSS OF USE, DATA, OR PROFITS; OR BUSINESS INTERRUPTION) HOWEVER CAUSED AND ON ANY THEORY OF LIABILITY, WHETHER IN CONTRACT, STRICT LIABILITY, OR TORT (INCLUDING NEGLIGENCE OR OTHERWISE) ARISING IN ANY WAY OUT

OF THE USE OF THIS SOFTWARE, EVEN IF ADVISED OF THE POSSIBILITY OF SUCH DAMAGE.

---

## Roboto font family

Font data Copyright Google 2012

Licensed under the **Apache License, Version 2.0** (the “License”); you may not use this file except in compliance with the License. You may obtain a copy of the License at:

**<http://www.apache.org/licenses/LICENSE-2.0>**

Unless required by applicable law or agreed to in writing, software distributed under the License is distributed on an “AS IS” BASIS, WITHOUT WARRANTIES OR CONDITIONS OF ANY KIND, either express or implied. See the License for the specific language governing permissions and limitations under the License.

---

## Skia

Copyright (c) 2011 Google Inc. All rights reserved.

Redistribution and use in source and binary forms, with or without modification, are permitted provided that the following conditions are met:

1. Redistributions of source code must retain the above copyright notice, this list of conditions and the following disclaimer.
2. Redistributions in binary form must reproduce the above copyright notice, this list of conditions and the following disclaimer in the documentation and/or other materials provided with the distribution. Neither the name of Google Inc. nor the names of its contributors may be used to endorse or promote products derived from this software without specific prior written permission.

THIS SOFTWARE IS PROVIDED BY THE COPYRIGHT HOLDERS AND CONTRIBUTORS “AS IS” AND ANY EXPRESS OR IMPLIED WARRANTIES, INCLUDING, BUT NOT LIMITED TO, THE IMPLIED WARRANTIES OF

MERCHANTABILITY AND FITNESS FOR A PARTICULAR PURPOSE ARE DISCLAIMED. IN NO EVENT SHALL THE COPYRIGHT OWNER OR CONTRIBUTORS BE LIABLE FOR ANY DIRECT, INDIRECT, INCIDENTAL, SPECIAL, EXEMPLARY, OR CONSEQUENTIAL DAMAGES (INCLUDING, BUT NOT LIMITED TO, PROCUREMENT OF SUBSTITUTE GOODS OR SERVICES; LOSS OF USE, DATA, OR PROFITS; OR BUSINESS INTERRUPTION) HOWEVER CAUSED AND ON ANY THEORY OF LIABILITY, WHETHER IN CONTRACT, STRICT LIABILITY, OR TORT (INCLUDING NEGLIGENCE OR OTHERWISE) ARISING IN ANY WAY OUT OF THE USE OF THIS SOFTWARE, EVEN IF ADVISED OF THE POSSIBILITY OF SUCH DAMAGE.

---

## **TinyXML**

Copyright (c) 2000-2002 Lee Thomason ([www.grinninglizard.com](http://www.grinninglizard.com))

This software is provided 'as-is', without any express or implied warranty. In no event will the authors be held liable for any damages arising from the use of this software.

Permission is granted to anyone to use this software for any purpose, including commercial applications, and to alter it and redistribute it freely, subject to the following restrictions:

1. The origin of this software must not be misrepresented; you must not claim that you wrote the original software. If you use this software in a product, an acknowledgment in the product documentation would be appreciated but is not required.
  2. Altered source versions must be plainly marked as such, and must not be misrepresented as being the original software.
  3. This notice may not be removed or altered from any source distribution.
- 

## **Tipue Search**

Copyright (c) 2017 Tipue

Permission is hereby granted, free of charge, to any person obtaining a copy of this software and associated documentation files (the "Software"), to deal in the Software without restriction, including without limitation the rights to use, copy, modify, merge, publish, distribute, sublicense, and/or sell copies of the Software, and to permit persons to whom the Software is furnished to do so, subject to the following conditions:

The above copyright notice and this permission notice shall be included in all copies or substantial portions of the Software.

THE SOFTWARE IS PROVIDED "AS IS", WITHOUT WARRANTY OF ANY KIND, EXPRESS OR IMPLIED, INCLUDING BUT NOT LIMITED TO THE WARRANTIES OF MERCHANTABILITY, FITNESS FOR A PARTICULAR PURPOSE AND NONINFRINGEMENT. IN NO EVENT SHALL THE AUTHORS OR COPYRIGHT HOLDERS BE LIABLE FOR ANY CLAIM, DAMAGES OR OTHER LIABILITY, WHETHER IN AN ACTION OF CONTRACT, TORT OR OTHERWISE, ARISING FROM, OUT OF OR IN CONNECTION WITH THE SOFTWARE OR THE USE OR OTHER DEALINGS IN THE SOFTWARE.

---

## **vectorize**

Copyright (c) 2012 Aaron Wishnick. All rights reserved.

Redistribution and use in source and binary forms, with or without modification, are permitted provided that the following conditions are met:

1. Redistributions of source code must retain the above copyright notice, this list of conditions and the following disclaimer.
2. Redistributions in binary form must reproduce the above copyright notice, this list of conditions and the following disclaimer in the documentation and/or other materials provided with the distribution.
3. Neither the name of the <organization> nor the names of its contributors may be used to endorse or promote products derived from this software without specific prior written permission.

THIS SOFTWARE IS PROVIDED BY THE COPYRIGHT HOLDERS AND CONTRIBUTORS "AS IS" AND ANY EXPRESS OR IMPLIED WARRANTIES, INCLUDING, BUT NOT LIMITED TO, THE IMPLIED WARRANTIES OF MERCHANTABILITY AND FITNESS FOR A PARTICULAR PURPOSE ARE DISCLAIMED. IN NO EVENT SHALL <COPYRIGHT HOLDER> BE LIABLE FOR ANY DIRECT, INDIRECT, INCIDENTAL, SPECIAL, EXEMPLARY, OR CONSEQUENTIAL DAMAGES (INCLUDING, BUT NOT LIMITED TO, PROCUREMENT OF SUBSTITUTE GOODS OR SERVICES; LOSS OF USE, DATA, OR PROFITS; OR BUSINESS INTERRUPTION) HOWEVER CAUSED AND ON ANY THEORY OF LIABILITY, WHETHER IN CONTRACT, STRICT LIABILITY, OR TORT (INCLUDING NEGLIGENCE OR OTHERWISE) ARISING IN ANY WAY OUT OF THE USE OF THIS SOFTWARE, EVEN IF ADVISED OF THE POSSIBILITY OF SUCH DAMAGE.

---

## **xsimd**

Copyright (c) 2016, Johan Mabilie, Sylvain Corlay, Wolf Vollprecht and Martin Renou Copyright (c) 2016, QuantStack All rights reserved.

Redistribution and use in source and binary forms, with or without modification, are permitted provided that the following conditions are met:

1. Redistributions of source code must retain the above copyright notice, this list of conditions and the following disclaimer.
2. Redistributions in binary form must reproduce the above copyright notice, this list of conditions and the following disclaimer in the documentation and/or other materials provided with the distribution.
3. Neither the name of the copyright holder nor the names of its contributors may be used to endorse or promote products derived from this software without specific prior written permission.

THIS SOFTWARE IS PROVIDED BY THE COPYRIGHT HOLDERS AND CONTRIBUTORS "AS IS" AND ANY EXPRESS OR IMPLIED WARRANTIES, INCLUDING, BUT NOT LIMITED TO, THE IMPLIED WARRANTIES OF MERCHANTABILITY AND FITNESS FOR A PARTICULAR PURPOSE ARE DISCLAIMED. IN NO EVENT SHALL THE COPYRIGHT HOLDER OR CONTRIBUTORS BE LIABLE FOR ANY DIRECT, INDIRECT, INCIDENTAL, SPECIAL, EXEMPLARY, OR CONSEQUENTIAL DAMAGES (INCLUDING,

BUT NOT LIMITED TO, PROCUREMENT OF SUBSTITUTE GOODS OR SERVICES; LOSS OF USE, DATA, OR PROFITS; OR BUSINESS INTERRUPTION) HOWEVER CAUSED AND ON ANY THEORY OF LIABILITY, WHETHER IN CONTRACT, STRICT LIABILITY, OR TORT (INCLUDING NEGLIGENCE OR OTHERWISE) ARISING IN ANY WAY OUT OF THE USE OF THIS SOFTWARE, EVEN IF ADVISED OF THE POSSIBILITY OF SUCH DAMAGE.

---

## **Yoga**

Version 1.9.0

MIT License

Copyright (c) 2014-present, Facebook, Inc.

Permission is hereby granted, free of charge, to any person obtaining a copy of this software and associated documentation files (the "Software"), to deal in the Software without restriction, including without limitation the rights to use, copy, modify, merge, publish, distribute, sublicense, and/or sell copies of the Software, and to permit persons to whom the Software is furnished to do so, subject to the following conditions:

The above copyright notice and this permission notice shall be included in all copies or substantial portions of the Software.

THE SOFTWARE IS PROVIDED "AS IS", WITHOUT WARRANTY OF ANY KIND, EXPRESS OR IMPLIED, INCLUDING BUT NOT LIMITED TO THE WARRANTIES OF MERCHANTABILITY, FITNESS FOR A PARTICULAR PURPOSE AND NONINFRINGEMENT. IN NO EVENT SHALL THE AUTHORS OR COPYRIGHT HOLDERS BE LIABLE FOR ANY CLAIM, DAMAGES OR OTHER LIABILITY, WHETHER IN AN ACTION OF CONTRACT, TORT OR OTHERWISE, ARISING FROM, OUT OF OR IN CONNECTION WITH THE SOFTWARE OR THE USE OR OTHER DEALINGS IN THE SOFTWARE.

---

## **zlib**

Copyright (c) 1995-2004 Jean-loup Gailly and Mark Adler.

This software is provided 'as-is', without any express or implied warranty. In no event will the authors be held liable for any damages arising from the use of this software.

Permission is granted to anyone to use this software for any purpose, including commercial applications, and to alter it and redistribute it freely, subject to the following restrictions:

1. The origin of this software must not be misrepresented; you must not claim that you wrote the original software. If you use this software in a product, an acknowledgment in the product documentation would be appreciated but is not required.
2. Altered source versions must be plainly marked as such, and must not be misrepresented as being the original software.
3. This notice may not be removed or altered from any source distribution.

Jean-loup Gailly [jloup@gzip.org](mailto:jloup@gzip.org)

Mark Adler [madler@alumni.caltech.edu](mailto:madler@alumni.caltech.edu)

---

# End User License Agreement

## End User License Agreement

READ CAREFULLY THE TERMS AND CONDITIONS OF THIS END USER LICENSE AGREEMENT ("AGREEMENT") BEFORE YOU CLICK ON THE "ACCEPT" BUTTON OR OTHERWISE DOWNLOAD, INSTALL OR USE THE PRODUCT. DOING SO AND/OR USING THE LICENSED SOFTWARE OR ANY TECHNOLOGY, IDEA, DATA AND DATABASES, ALGORITHMS, PRESETS, INFORMATION OR DOCUMENTATION CONTAINED THEREIN OR PROVIDED THEREWITH (COLLECTIVELY, THE "SOFTWARE") ESTABLISHES A BINDING AGREEMENT BETWEEN YOU AS THE PERSON LICENSING THE SOFTWARE, EITHER ON BEHALF OF YOURSELF AS AN INDIVIDUAL OR OF ANY THIRD-PARTY ENTITY ("YOU" OR "LICENSEE") AND IZOTOPE, INC. ("IZOTOPE"). YOU (WHETHER AN INDIVIDUAL OR DULY AUTHORIZED REPRESENTATIVE OF A LEGAL ENTITY) WARRANT AND AGREE THAT YOU HAVE THE LEGAL

CAPACITY AND AUTHORITY TO ENTER INTO A BINDING AGREEMENT, THAT YOU SHALL ADHERE TO THE TERMS AND CONDITIONS SET FORTH IN THIS AGREEMENT, AND THAT YOU SHALL USE THE SOFTWARE ONLY IN ACCORDANCE WITH THIS AGREEMENT AND WITH ALL APPLICABLE LAWS.

1. **General Terms.** If You purchase the Software on a subscription basis, either monthly or annual, your use of the Software is further governed by iZotope's Subscription Terms and Conditions ("Subscription Terms" <https://www.izotope.com/subscription-terms>), which terms are incorporated herein by this reference. In the event of any conflict between this Agreement and the Subscription Terms, the Subscription Terms shall take precedence for subscribers; provided, however, that, with respect to the download, installation and use of the Software by any user, this Agreement, and the Subscription Terms as applicable, shall take precedence over any other agreement between You and iZotope, including but not limited to purchase order or procurement terms and conditions.
2. **License Grant.** Subject to the terms and conditions of this Agreement, iZotope hereby grants to You, the Licensee, a non-exclusive license to use the Software accompanying this Agreement whether in printed, "online" or electronic form, either on a stand-alone computer or on a network, on any one computer at any one time. If more than one user will be using the Software at any one time, You must obtain from iZotope an additional license (or licenses, as applicable) for each additional concurrent user of the Software. The Software is "in use" on a computer when loaded into memory (RAM). You may make one copy of the Software solely for backup or archival purposes if all copyright and other notices are reproduced on that copy, or You may copy the Software to a single hard disk provided that You keep the original solely for backup or archival purposes. If the Software is an upgrade, You must have a license for the Software from which it is upgraded. If You receive the Software in more than one media, that does not affect the number of licenses You are receiving or any other term of this Agreement.
3. **Restrictions on Use.** You may not modify, adapt, decompile, disassemble or otherwise reverse engineer the Software, except to the extent this restriction is expressly prohibited by applicable law, nor may You create derivative works based upon the Software, or permit third parties to do so. You may not loan, rent, lease or

license the Software, or use the Software as a service bureau, as an application service provider, to perform consulting or training services for a third party or in any commercial time share arrangement, but You may permanently transfer your rights under this Agreement provided that You transfer this Agreement, the Software, and all accompanying printed materials and retain no copies, and the recipient agrees to the terms of this Agreement. Any such transfer must include the most recent update and all prior versions.

4. **Intellectual Property Ownership.** The copyrights, patents, trade secrets, trademarks, and all other intellectual property rights in the Software (including any images, photographs, animations, video, audio, music and text incorporated therein or provided therewith) are owned by iZotope or its licensors and are protected by the copyright, trademark, patent and other intellectual property laws of the United States and other countries, as well as by international treaty provisions. iZotope retains all rights not expressly granted in this Agreement. You shall not remove any product identification, trademark, copyright or other notices contained in or provided with the Software.
5. **Feedback.** iZotope shall have a royalty-free, worldwide, transferable, sublicenseable, irrevocable, perpetual license to use or incorporate into the Software any suggestions, ideas, enhancement requests, feedback, recommendations or other information provided by You relating to the features, functionality or operation of the Software (“Feedback”); provided, however, that iZotope shall have no obligation to use or incorporate into the Software any Feedback, and You shall have no obligation to provide Feedback.
6. **Registration Information.** When You activate the Software, iZotope may collect your name and email address and other contact information that You choose to provide (“Registration Information”). You agree that iZotope may use this Registration Information to contact You regarding your purchase and to deliver notifications relative to your use of the Software. iZotope does not collect or retain any financial information from or about You (such as payment card information).
7. **Usage Information.** When You activate and/or use the Software, iZotope may collect certain information about your computer or mobile device and your interaction with the Software via the

internet (“Usage Information”). iZotope analyzes this Usage Information for purposes of improving the Software, as well as to provide You with a more relevant user experience. Usage Information is generally collected in the aggregate form, without identifying any user individually, although IP addresses, computer and session ids in relation to purchases and downloads/installations of the Software may be tracked as part of iZotope’s customer order review, statistical analysis, and fraud and piracy prevention efforts. iZotope may send this Usage Information to a web or third-party cloud server for storage or further processing by iZotope and/or its partners, subsidiaries or affiliates, including, but not limited to, Google Analytics <https://marketingplatform.google.com/about/analytics/terms/us/> and Mixpanel <https://mixpanel.com/legal/terms-of-use/>, in accordance with such third party’s terms of service. The Software allows You the choice to opt in and share your Usage Information or to opt out, if You do not wish to provide iZotope with such Usage Information. For instructions on how to change your selection relative to the sharing of Usage Information, which You may do at any time, please visit: <https://www.izotope.com/en/analytics-opt-in.html>.

8. Privacy. iZotope’s collection and use of Registration and Usage Information is as provided in iZotope’s Privacy Policy, located at <https://www.izotope.com/en/privacy-policy.html>, which forms a part of this Agreement and to which you agree by means of your download, installation and use of the Software.
9. Support. Subject to the limited warranty stated herein, and further subject to your not being in violation of any term or condition of this Agreement, iZotope shall provide technical support and bug fixes, exclusive of any upgrades or new features, for the Software to the original purchaser for a period of twelve (12) months from the original purchase date and from the release date, respectively. Where your use of the Software is on a subscription basis, support shall be as provided for in the Subscription Terms. For support resources and assistance, please visit: <https://www.support.izotope.com/hc/en-us>.
10. Limited Warranty. iZotope warrants that, for a period of thirty (30) days from the date the Software is made available to You for download, the Software shall substantially conform to the applicable user documentation provided with the Software. Any implied warranties that may exist despite the disclaimer herein

shall be limited to thirty (30) days (“Warranty Period”). This limited warranty is void if You buy from an unauthorized reseller, You violate any term or condition of this Agreement, or if the failure of the Software is due to accident, abuse or misapplication.

11. Your Remedies. iZotope’s sole obligation and your exclusive remedy for any breach of warranty shall be, at iZotope’s sole option, either the return of the purchase price that You paid for the Software or the repair or replacement of the Software, media and documentation; provided, however, that, in all instances, You return the Software, together with all media and documentation and a copy of your receipt, to the location where You obtained it during the Warranty Period. Outside the United States, neither these remedies nor any support services are available without proof of purchase from an authorized non-US source.
12. Disclaimer. THE SOFTWARE IS PROVIDED “AS IS.” TO THE MAXIMUM EXTENT PERMITTED BY APPLICABLE LAW, EXCEPT FOR THE EXPRESS WARRANTY SET FORTH HEREIN, IZOTOPE DISCLAIMS ALL OTHER WARRANTIES, EXPRESS OR IMPLIED, INCLUDING BUT NOT LIMITED TO THE IMPLIED WARRANTIES OF NON-INFRINGEMENT, MERCHANTABILITY AND FITNESS FOR A PARTICULAR PURPOSE. IZOTOPE DOES NOT WARRANT THAT THE SOFTWARE WILL MEET YOUR REQUIREMENTS OR THAT THE SOFTWARE WILL OPERATE UNINTERRUPTED OR ERROR FREE. THE WARRANTY AND REMEDIES SET FORTH HEREIN ARE EXCLUSIVE AND IN LIEU OF ALL OTHERS, ORAL OR WRITTEN, EXPRESS OR IMPLIED. No dealer, distributor, agent or employee of iZotope is authorized to change or add to the warranty and/or remedies set forth herein. Any third-party software furnished with or accompanying the Software is not warranted by iZotope.
13. Limitation Of Liability. TO THE MAXIMUM EXTENT PERMITTED BY APPLICABLE LAW, IN NO EVENT SHALL IZOTOPE BE LIABLE FOR ANY AMOUNTS EXCEEDING THE AMOUNTS RECEIVED FROM YOU FOR YOUR LICENSE OF THE SOFTWARE, REGARDLESS OF THE FORM OF ACTION, AND WHETHER ARISING OUT OF THE USE OF OR INABILITY TO USE THE SOFTWARE (INCLUDING, WITHOUT LIMITATION, DAMAGES OR COSTS FOR LOSS OF PROFITS, BUSINESS, GOODWILL, DATA OR OTHER ASSETS, OR COMPUTER PROGRAMS), EVEN IF IZOTOPE HAS BEEN ADVISED OF THE POSSIBILITY OF SUCH DAMAGES. Some jurisdictions do not allow

exclusion or limitation of liability for consequential or incidental damages, so this limitation may not apply to You.

14. License Termination. This Agreement, together with the license rights granted to You herein, shall terminate automatically if You fail to comply with any of its terms. Upon termination, You must immediately cease using and destroy all copies of the Software.
  
15. Licenses to U.S. Government. This paragraph applies to all acquisitions of the Software by or for the federal government, or by any prime contractor or subcontractor (at any tier) under any contract, grant, cooperative agreement or other activity with the United States Government (collectively, the "U.S. Government"). By clicking "I ACCEPT", You are agreeing on behalf of the U.S. Government that the Software and any documentation related thereto are respectively "commercial computer software" and "commercial computer software documentation" within the meaning of the acquisition regulation(s) applicable to this procurement. This Agreement alone shall govern the U.S. Government's use of the Software and shall supersede any conflicting contractual terms or conditions, except as may be set forth in the Subscription Terms, where the U.S. Government's use of the Software is on a subscription basis. If the license granted by this Agreement fails to meet the U.S. Government's needs or is inconsistent in any respect with federal law, the U.S. Government shall return the Software unused to iZotope.  
Contractor/Manufacturer is iZotope, Inc., 7 Avenue de Lafayette, P.O. Box 121232, Boston, MA 02112-0232.
  
16. General. The export of the Software from the United States and re-export from any other country is governed by the US Department of Commerce under the export control laws and regulations of the United States and by any applicable law of such other country, and the Software may not be exported or re-exported in violation of any such laws or regulations. This Agreement is the complete and exclusive statement of the agreement between You and iZotope and supersedes any proposal or prior agreement, oral or written, and any other communications relating to the subject matter of this Agreement. This Agreement shall be governed by and interpreted in accordance with the laws of the Commonwealth of Massachusetts, United States of America, without regard to its conflict of laws provisions, and any claim arising out of this Agreement shall be brought in state or federal court therein. ANY SUCH LEGAL PROCEEDING SHALL NOT BE HEARD BEFORE A

JURY. EACH PARTY HEREBY WAIVES ANY RIGHT TO A JURY TRIAL. To the extent permitted by applicable law, You agree that You will not bring any class action lawsuit against iZotope or be a representative plaintiff or plaintiff class member in any such lawsuit. The application of the United Nations Convention of Contracts for the International Sale of Goods is expressly excluded. This Agreement is in the English language only, which language shall be controlling in all respects, and all versions of this Agreement in any other language shall be for accommodation purposes only. Should You have any questions about this Agreement or iZotope's software use policies, please contact [\*\*legal@izotope.com\*\*](mailto:legal@izotope.com). If You desire to contact iZotope for any other reason, in the US, please email [\*\*sales@izotope.com\*\*](mailto:sales@izotope.com); outside the U.S., please contact the iZotope representative or affiliate serving your country or, if You are unsure whom to contact, iZotope at the above location.

#### 1.4.0